

# TUBE & FITTING SCAFFOLD DESIGN:

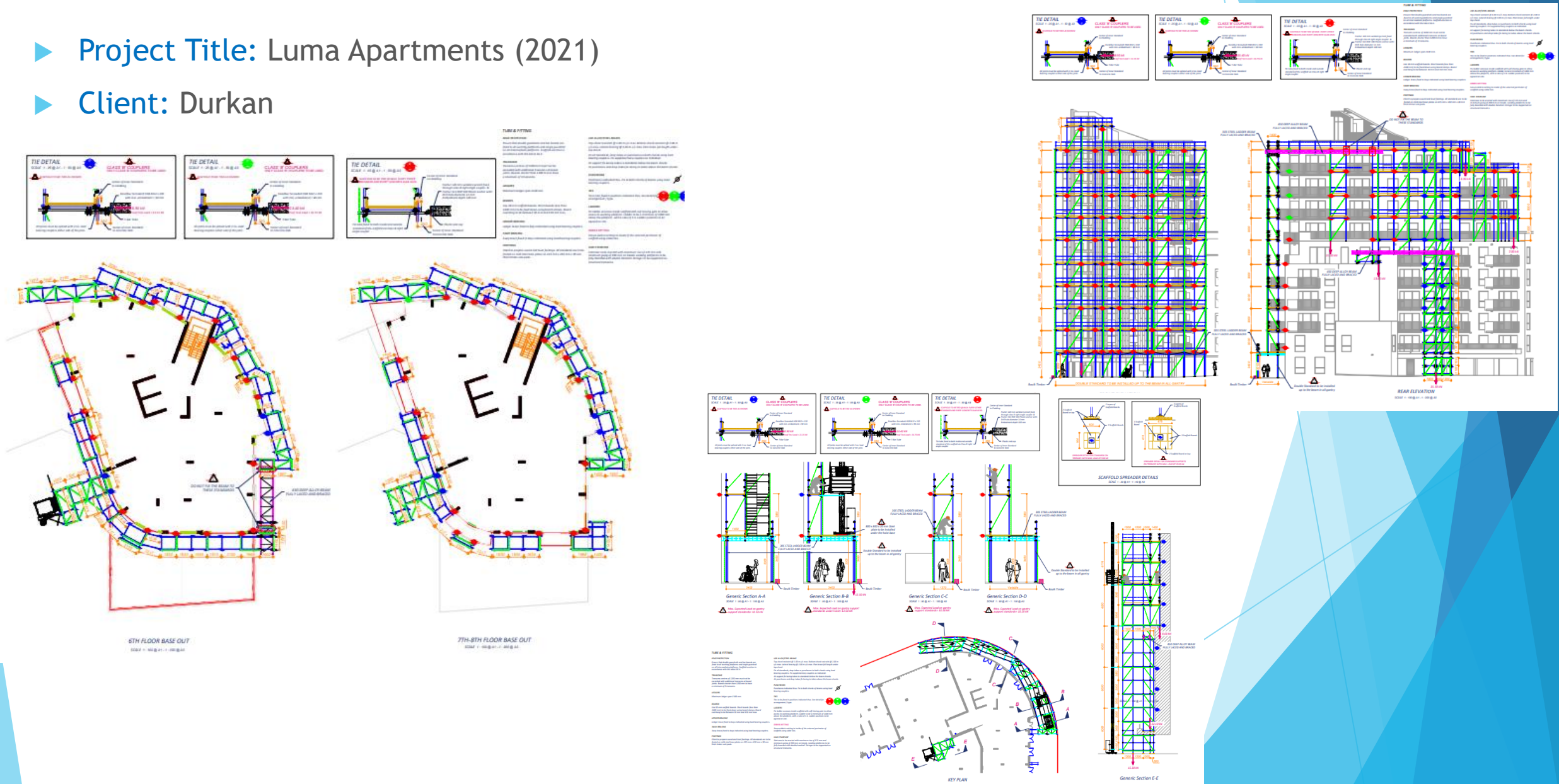
An aerial photograph of a city skyline, likely London, featuring several prominent skyscrapers and a dense urban landscape. In the foreground, several construction cranes are visible, some with red and green jibs, and scaffolding structures are present on buildings under construction. The image is overlaid with a large, dark blue, semi-transparent geometric shape that tapers from the top left towards the bottom right. The text is overlaid on this shape.

- TRADITIONAL TUBE & FITTING

- READYLOCK TRANSOM

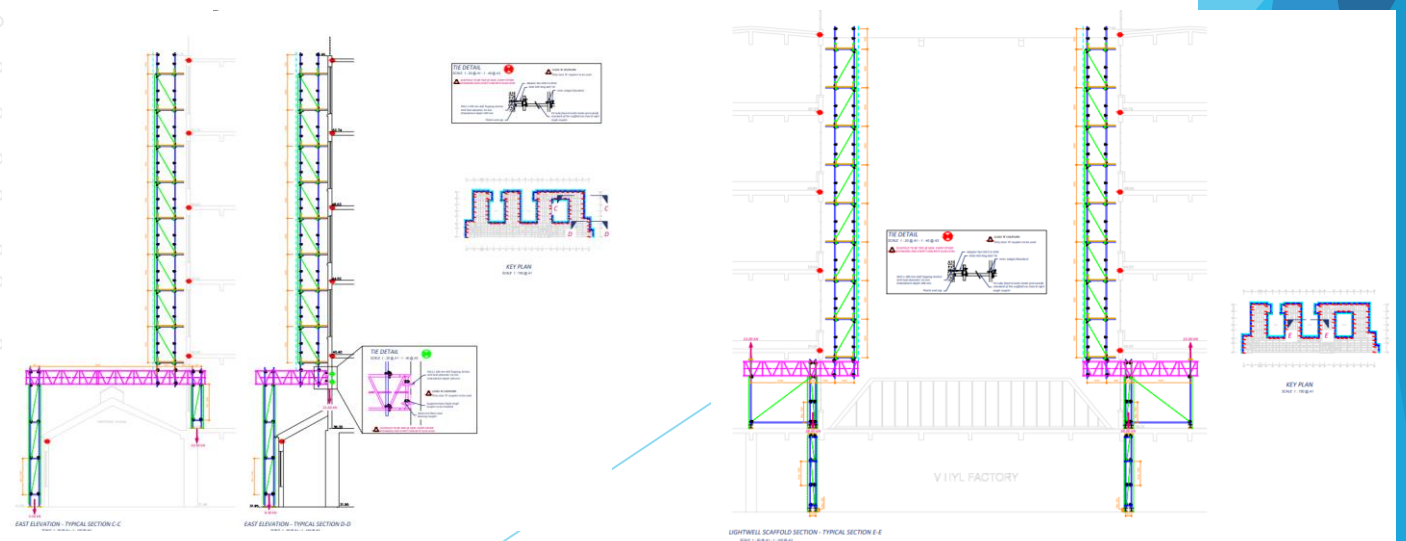
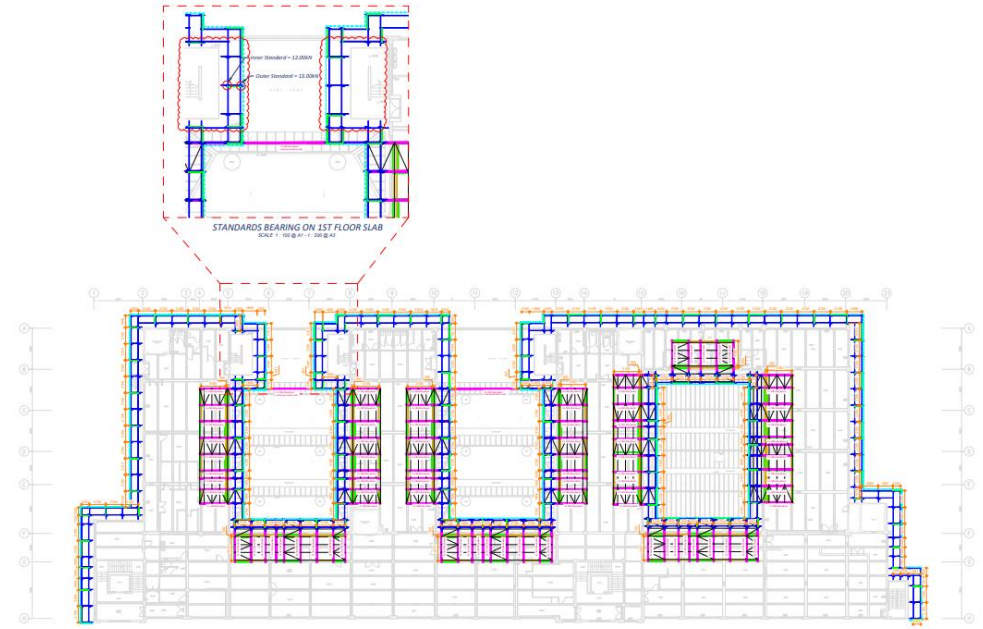
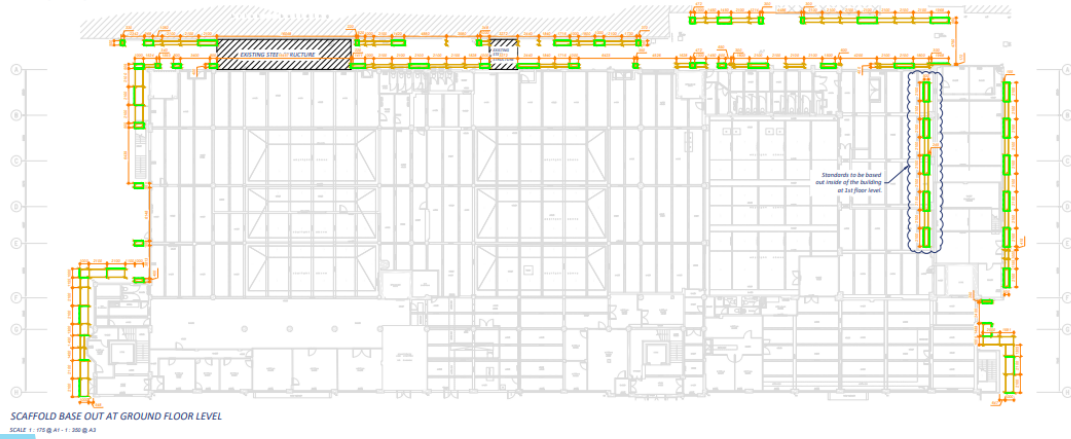
# INDEPENDENT SCAFFOLD: TUBE & FITTING

- ▶ Project Title: Luma Apartments (2021)
- ▶ Client: Durkan



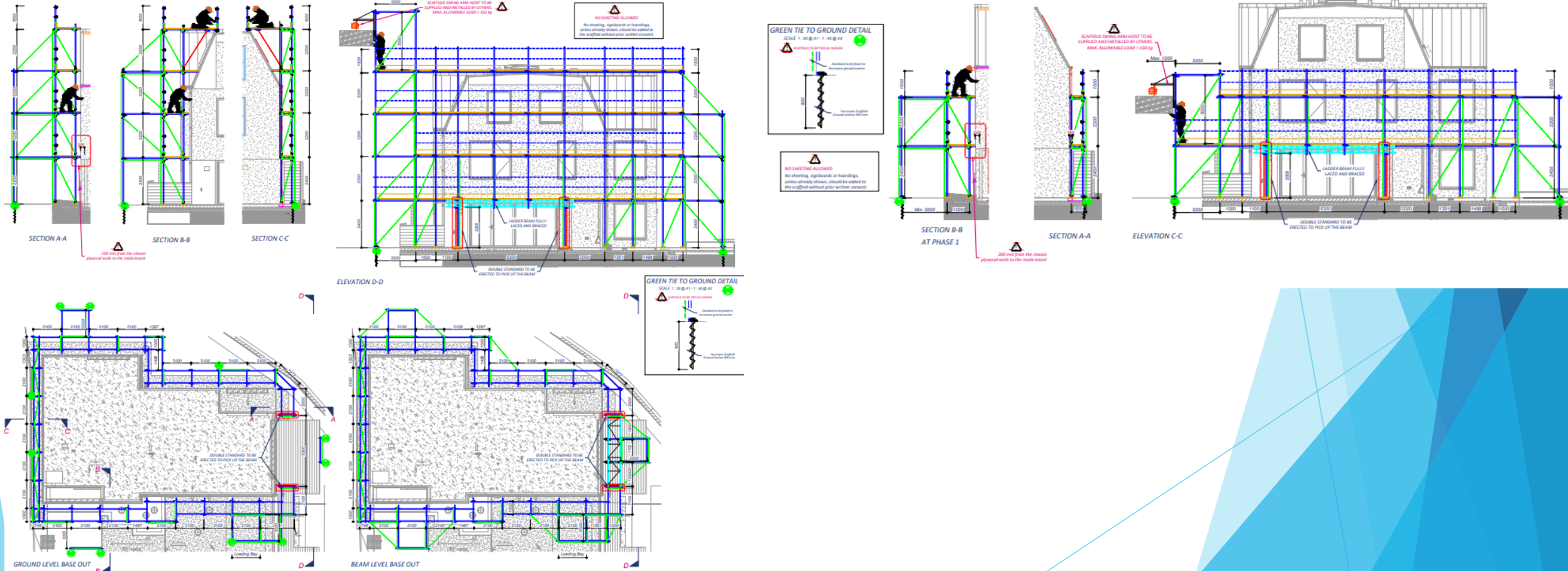
# INDEPENDENT SCAFFOLD: TUBE & FITTING

- ▶ Project Title: Enterprise House (2021)
- ▶ Client: Scope Property Services



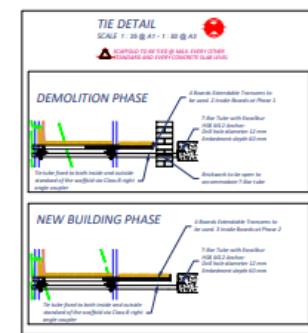
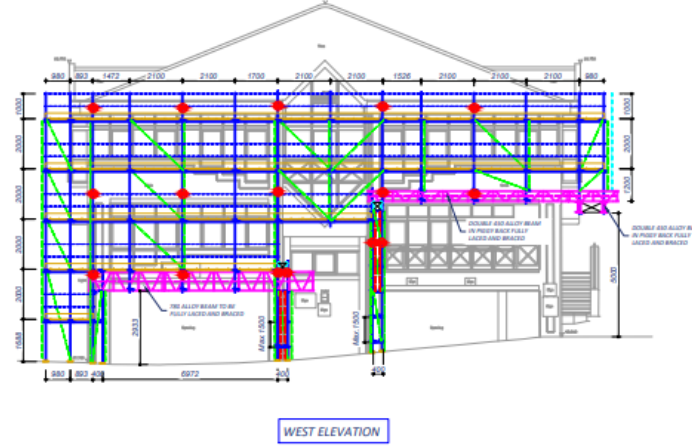
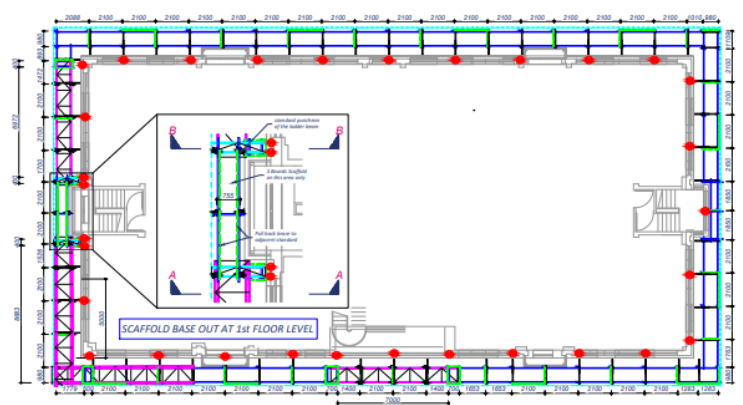
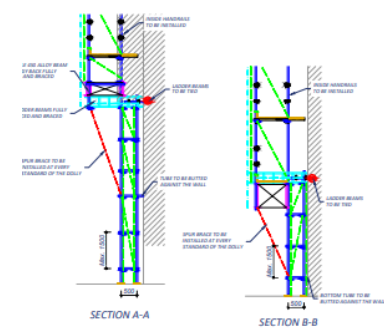
# INDEPENDENT SCAFFOLD: TUBE & FITTING

- ▶ Project Title: Lyonsdown Road (2021)
- ▶ Client: Facit Homes



# INDEPENDENT SCAFFOLD: TUBE & FITTING

- ▶ Project Title: Charter Court (2021)
- ▶ Client: Thomas Sindén



**TUBE & FITTING**

**KEY FUNCTION**  
 Scaffold shall double guardrails and toe boards are fixed to all working platforms over edge profile of all structural conditions. Scaffold shall be erected in accordance with the above details.

**STANDARDS**  
 The scaffold shall be erected in accordance with the standards mentioned in the contract documents. The scaffold shall be erected in accordance with the standards mentioned in the contract documents.

**LOADS**  
 Maximum height over 2000 mm.

**BRACE**  
 Use 38 mm x 38 mm x 3 mm angle bracing. Use 38 mm x 38 mm x 3 mm angle bracing. Use 38 mm x 38 mm x 3 mm angle bracing. Use 38 mm x 38 mm x 3 mm angle bracing.

**LADDER BRACING**  
 Ladder bracing shall be fixed to the scaffold using bolt bearing washers.

**RAIL BRACING**  
 Railing bracing shall be fixed to the scaffold using bolt bearing washers.

**FASTENERS**  
 Use 6mm stainless steel bolts and nuts. All fasteners are to be fixed to the scaffold using bolt bearing washers. Use 6mm stainless steel bolts and nuts. All fasteners are to be fixed to the scaffold using bolt bearing washers.

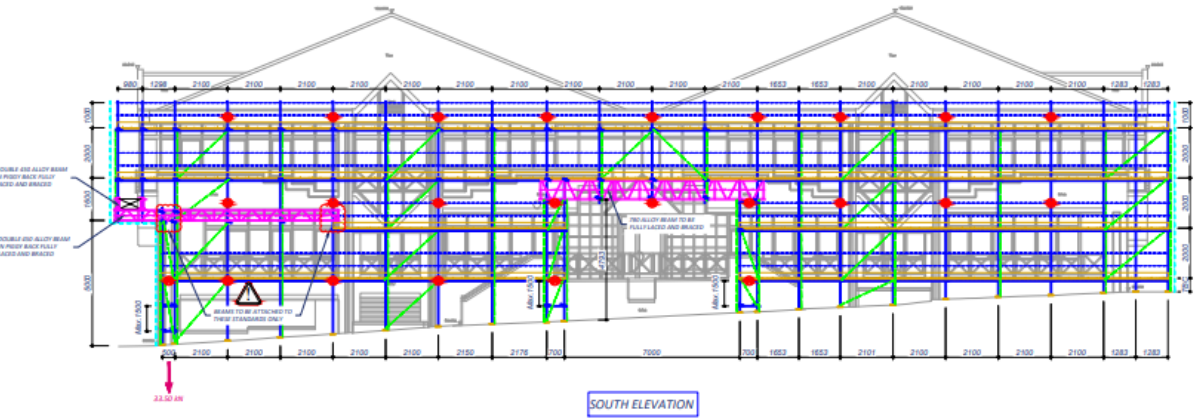
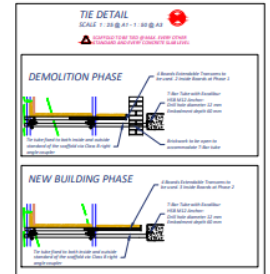
**USE THE CORRECT BRACE**  
 The correct brace is to be used. The correct brace is to be used. The correct brace is to be used. The correct brace is to be used.

**FUNCTIONS**  
 The scaffold shall be erected in accordance with the standards mentioned in the contract documents. The scaffold shall be erected in accordance with the standards mentioned in the contract documents.

**TIE**  
 The tie shall be positioned in accordance with the standards mentioned in the contract documents. The tie shall be positioned in accordance with the standards mentioned in the contract documents.

**LEGEND**  
 All dimensions are in millimeters unless otherwise stated. All dimensions are in millimeters unless otherwise stated. All dimensions are in millimeters unless otherwise stated. All dimensions are in millimeters unless otherwise stated.

**NOTES**  
 Refer to the contract documents for further information. Refer to the contract documents for further information. Refer to the contract documents for further information. Refer to the contract documents for further information.



**TUBE & FITTING**

**KEY FUNCTION**  
 Scaffold shall double guardrails and toe boards are fixed to all working platforms over edge profile of all structural conditions. Scaffold shall be erected in accordance with the above details.

**STANDARDS**  
 The scaffold shall be erected in accordance with the standards mentioned in the contract documents. The scaffold shall be erected in accordance with the standards mentioned in the contract documents.

**LOADS**  
 Maximum height over 2000 mm.

**BRACE**  
 Use 38 mm x 38 mm x 3 mm angle bracing. Use 38 mm x 38 mm x 3 mm angle bracing. Use 38 mm x 38 mm x 3 mm angle bracing. Use 38 mm x 38 mm x 3 mm angle bracing.

**LADDER BRACING**  
 Ladder bracing shall be fixed to the scaffold using bolt bearing washers.

**RAIL BRACING**  
 Railing bracing shall be fixed to the scaffold using bolt bearing washers.

**FASTENERS**  
 Use 6mm stainless steel bolts and nuts. All fasteners are to be fixed to the scaffold using bolt bearing washers. Use 6mm stainless steel bolts and nuts. All fasteners are to be fixed to the scaffold using bolt bearing washers.

**USE THE CORRECT BRACE**  
 The correct brace is to be used. The correct brace is to be used. The correct brace is to be used. The correct brace is to be used.

**FUNCTIONS**  
 The scaffold shall be erected in accordance with the standards mentioned in the contract documents. The scaffold shall be erected in accordance with the standards mentioned in the contract documents.

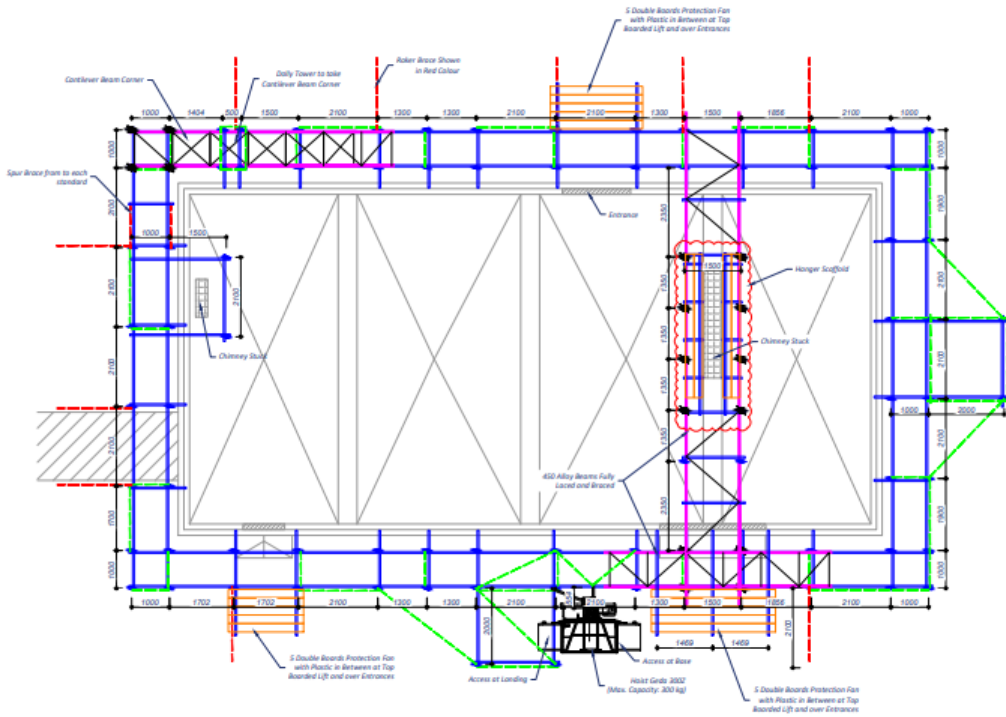
**TIE**  
 The tie shall be positioned in accordance with the standards mentioned in the contract documents. The tie shall be positioned in accordance with the standards mentioned in the contract documents.

**LEGEND**  
 All dimensions are in millimeters unless otherwise stated. All dimensions are in millimeters unless otherwise stated. All dimensions are in millimeters unless otherwise stated. All dimensions are in millimeters unless otherwise stated.

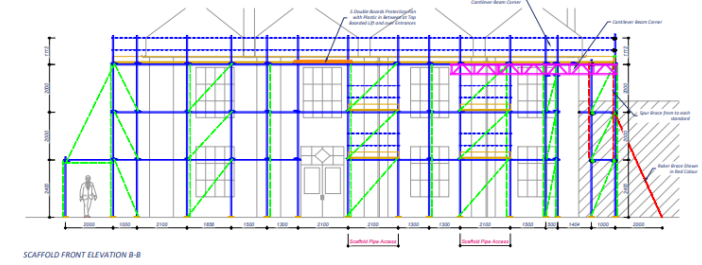
**NOTES**  
 Refer to the contract documents for further information. Refer to the contract documents for further information. Refer to the contract documents for further information. Refer to the contract documents for further information.

# INDEPENDENT SCAFFOLD: TUBE & FITTING

- ▶ Project Title: Hanover Court (2021)
- ▶ Client: Engie



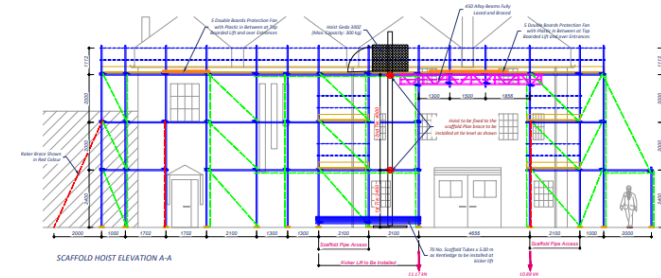
SCAFFOLD BASE OUT AT TOP LEVEL



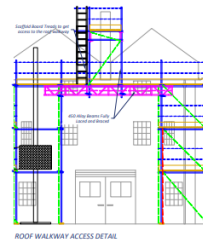
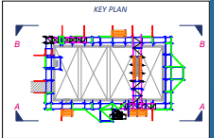
SCAFFOLD FRONT ELEVATION B-B

**NOTES**

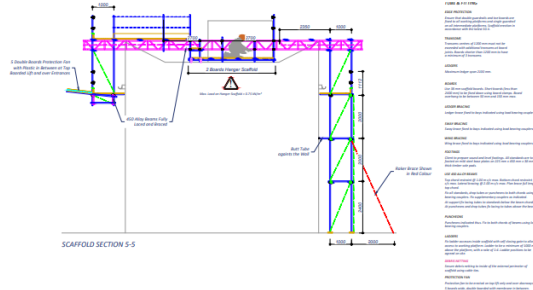
1. All work to be carried out in accordance with the relevant British Standards.
2. All materials to be of the highest quality and to be supplied in accordance with the relevant British Standards.
3. All work to be carried out in accordance with the relevant British Standards.
4. All work to be carried out in accordance with the relevant British Standards.
5. All work to be carried out in accordance with the relevant British Standards.
6. All work to be carried out in accordance with the relevant British Standards.
7. All work to be carried out in accordance with the relevant British Standards.
8. All work to be carried out in accordance with the relevant British Standards.
9. All work to be carried out in accordance with the relevant British Standards.
10. All work to be carried out in accordance with the relevant British Standards.



SCAFFOLD HOIST ELEVATION A-A



ROOF WALKWAY ACCESS DETAIL



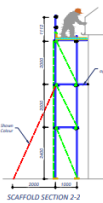
SCAFFOLD SECTION 5-5

**NOTES**

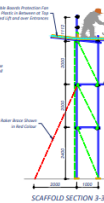
1. All work to be carried out in accordance with the relevant British Standards.
2. All materials to be of the highest quality and to be supplied in accordance with the relevant British Standards.
3. All work to be carried out in accordance with the relevant British Standards.
4. All work to be carried out in accordance with the relevant British Standards.
5. All work to be carried out in accordance with the relevant British Standards.
6. All work to be carried out in accordance with the relevant British Standards.
7. All work to be carried out in accordance with the relevant British Standards.
8. All work to be carried out in accordance with the relevant British Standards.
9. All work to be carried out in accordance with the relevant British Standards.
10. All work to be carried out in accordance with the relevant British Standards.



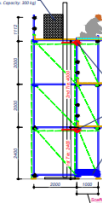
SCAFFOLD SECTION 3-1



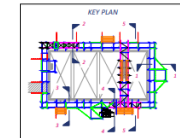
SCAFFOLD SECTION 2-2



SCAFFOLD SECTION 3-3



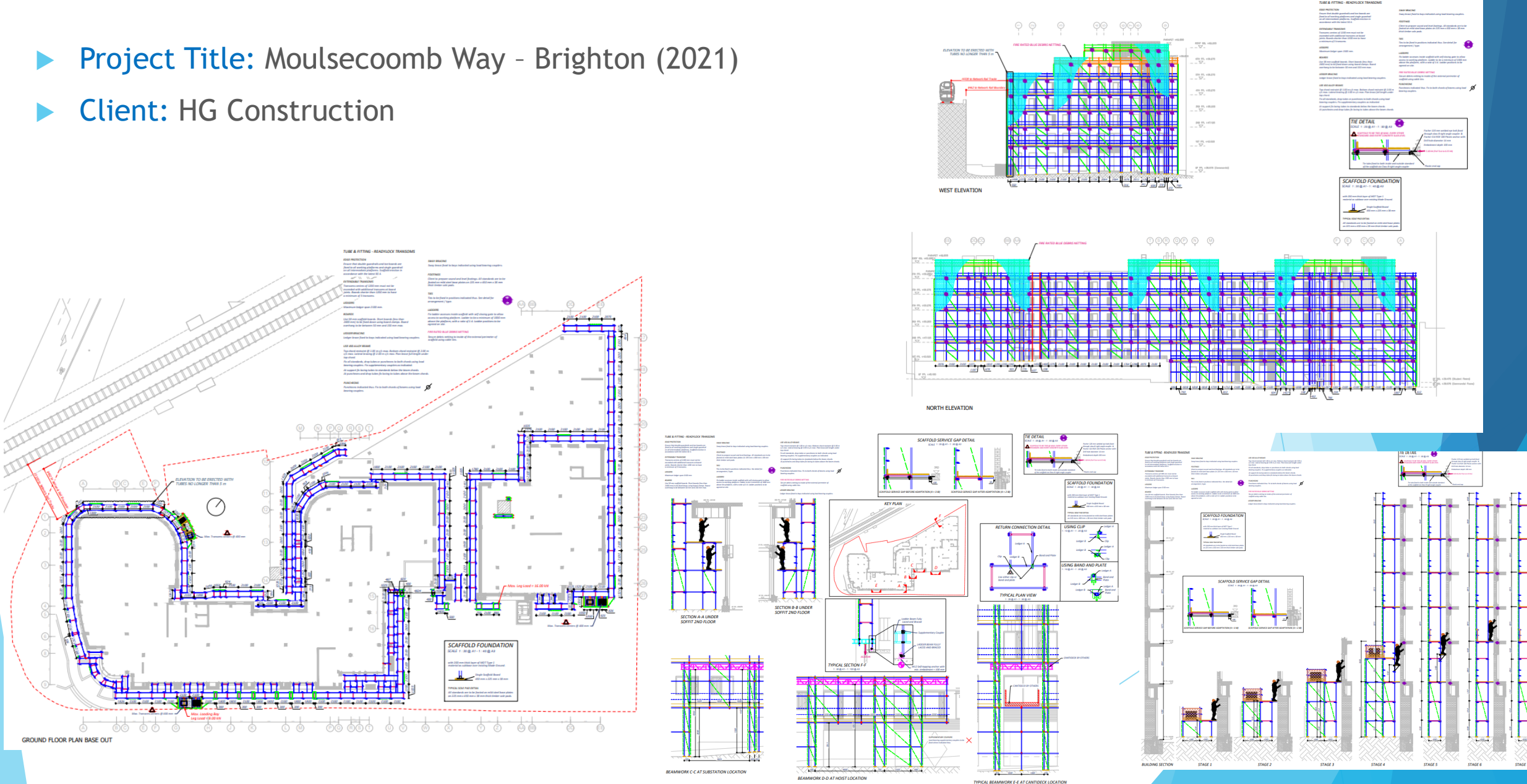
SCAFFOLD SECTION 4-4



KEY PLAN

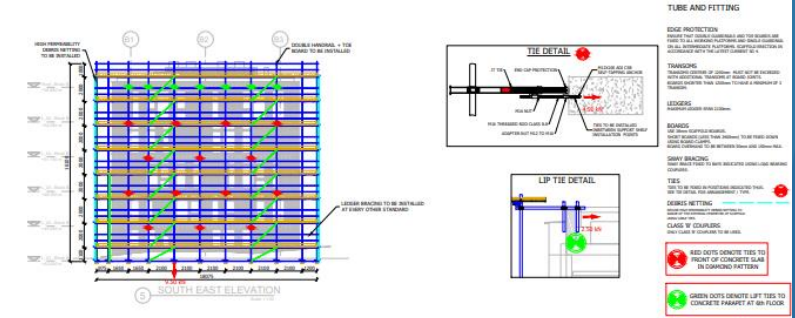
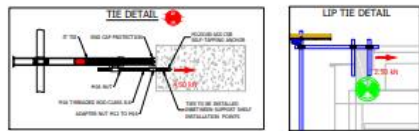
# INDEPENDENT SCAFFOLD: TUBE & FITTING-READYLOCK

- ▶ Project Title: Moulsecoomb Way - Brighton (2021)
- ▶ Client: HG Construction



# INDEPENDENT SCAFFOLD: TUBE & FITTING-READYLOCK

- ▶ Project Title: Guilden Park (2020)
- ▶ Client: McAlleer and Rushe



**TUBE AND FITTING**

**EDGE PROTECTION**  
 EDGE PROTECTION TO BE INSTALLED TO PREVENT FALLS FROM SCAFFOLD.  
 EDGE PROTECTION TO BE INSTALLED TO PREVENT FALLS FROM SCAFFOLD.

**TRANSOMS**  
 TRANSOMS TO BE INSTALLED TO BRACE TO CONCRETE SLAB.  
 TRANSOMS TO BE INSTALLED TO BRACE TO CONCRETE SLAB.

**LEGGERS**  
 LEGGERS TO BE INSTALLED TO BRACE TO CONCRETE SLAB.  
 LEGGERS TO BE INSTALLED TO BRACE TO CONCRETE SLAB.

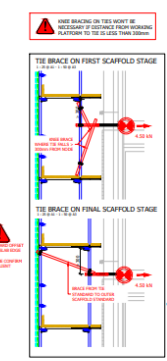
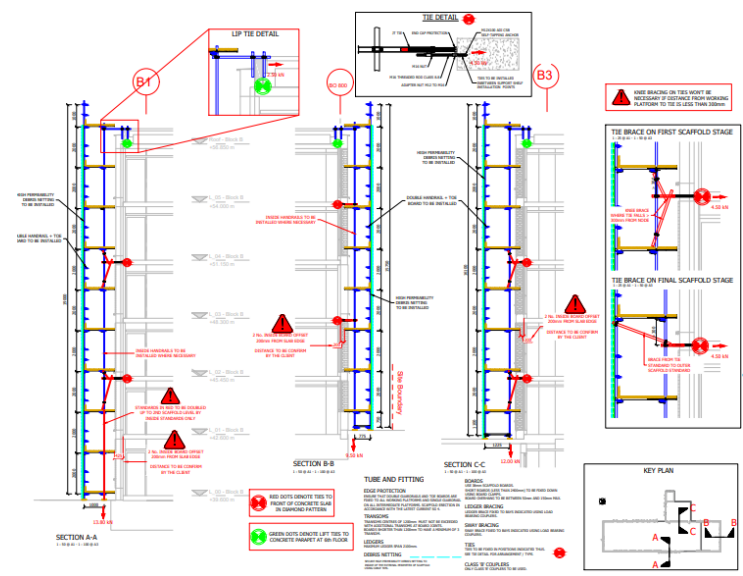
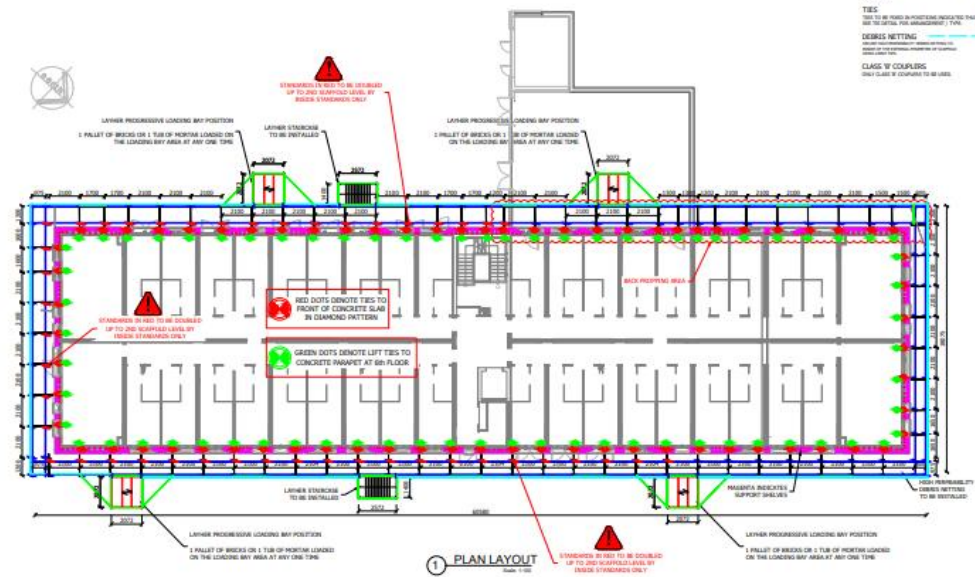
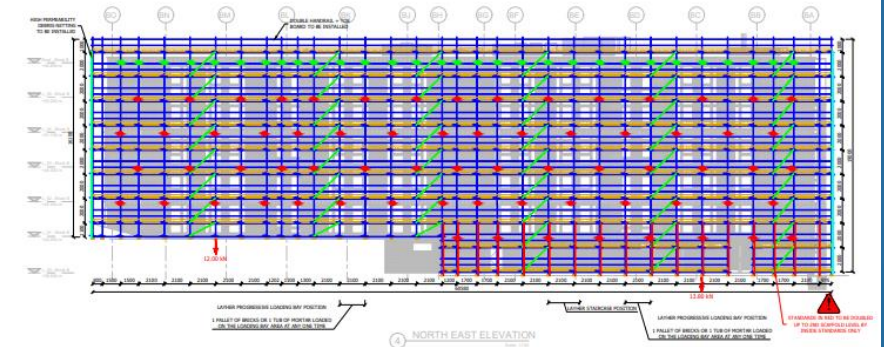
**BRACES**  
 BRACES TO BE INSTALLED TO BRACE TO CONCRETE SLAB.  
 BRACES TO BE INSTALLED TO BRACE TO CONCRETE SLAB.

**SWAY BRACING**  
 SWAY BRACING TO BE INSTALLED TO BRACE TO CONCRETE SLAB.  
 SWAY BRACING TO BE INSTALLED TO BRACE TO CONCRETE SLAB.

**TIES**  
 TIES TO BE INSTALLED TO BRACE TO CONCRETE SLAB.  
 TIES TO BE INSTALLED TO BRACE TO CONCRETE SLAB.

**DIAMOND PATTERN**  
 DIAMOND PATTERN TO BE INSTALLED TO BRACE TO CONCRETE SLAB.  
 DIAMOND PATTERN TO BE INSTALLED TO BRACE TO CONCRETE SLAB.

**CLASS 'W' COUPLERS**  
 CLASS 'W' COUPLERS TO BE INSTALLED TO BRACE TO CONCRETE SLAB.  
 CLASS 'W' COUPLERS TO BE INSTALLED TO BRACE TO CONCRETE SLAB.





# INDEPENDENT SCAFFOLD: TUBE & FITTING-READYLOCK

- ▶ Project Title: Great Eastern Quays - Blocks E-G-H-K-L-M-Q-R-S-T-U-V (2019)
- ▶ Client: Galliford Try

READYLOCK TRANSOMS AND INTERMEDIATE EXTENDABLE TRANSOMS TO BE USED

PROTECTION FAN POSITION TBC

MAIN INDEPENDENT SCAFFOLD 4+2 ADAPTED TO 4+1 + CHECKER PLATE

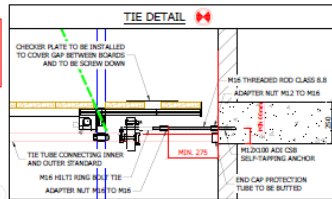
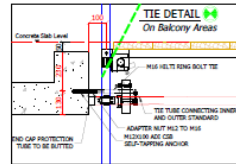
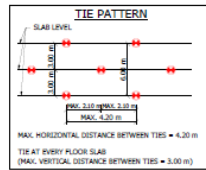
NO SHEETING ALLOWED

HANDRAIL TO ALL AREAS WHERE THERE IS A RISK OF FALL (3 No. HANDRAIL) DUE TO PREVENTING TOWERS TO BE USED AS LEDGER BRACING IS INSTALLED

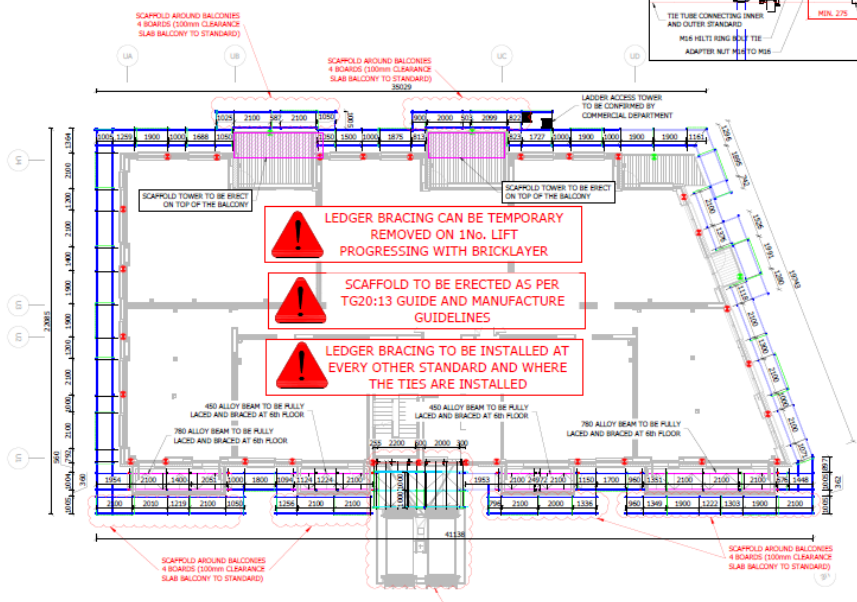
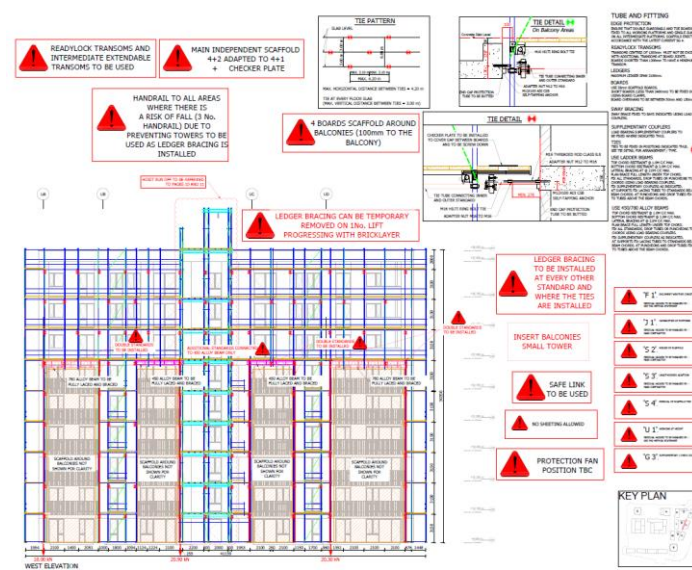
SAFE LINK TO BE USED

INSERT BALCONIES SMALL TOWER

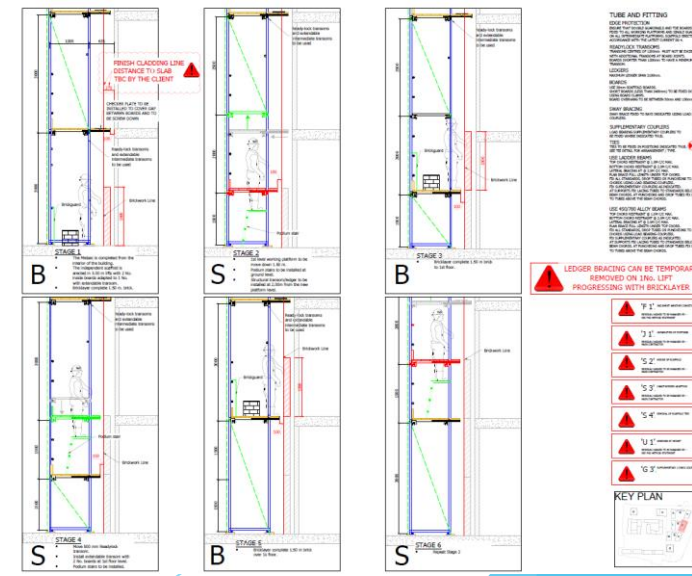
4 BOARDS SCAFFOLD AROUND BALCONIES (100mm TO THE BALCONY)



**TUBE AND FITTING**  
EDGE PROTECTION REQUIRE THAT DOUBLE CHANNELS AND TIE BOARDS ARE INSTALLED TO PREVENT FALLS FROM ALL INTERMEDIATE PLATFORMS. SCAFFOLD ERECTION IN ACCORDANCE WITH THE LATEST CODES SET 4.  
**READYLOCK TRANSOMS** TRANSOM CENTRES OF 200mm MUST NOT BE EXCEEDED WITH ADDITIONAL TRANSOM OR BOARD JOISTS. BOARDS SHORTER THAN 1200mm TO HAVE A MINIMUM OF 3 TRANSOMS.  
**LEDGERS** MAIN LEDGER SHOWN 300mm.  
**BOARDS** USE 30mm SCAFFOLD BOARDS. SHORT BOARDS (LESS THAN 1200mm) TO BE FIRED DOWN USING BOARD LAYERS. BOARD JOINTS TO BE BETWEEN 50mm AND 150mm MAX.  
**SWAY BRACING** SWAY BRACE FIRED TO BAYS INDICATED USING LOAD BEARING COUPLERS.  
**SUPPLEMENTARY COUPLERS** LOAD BEARING SUPPLEMENTARY COUPLERS TO BE FIRED WHERE INDICATED THIS.  
**TIES** TIES TO BE FIRED IN POSITIONS INDICATED THIS. SEE THE DETAIL FOR ARRANGEMENT / TYPE.  
**USE LEDGER BEAMS** TOP CHORD RESTRAINT @ 1.0M C/C MAX. LATERAL BRACING AT @ 2.0M C/C MAX. PLAN BRACE FULL LENGTH ABOVE OR BELOW THE CHORD. FOR ALL STANDING GUP TUBES TO CHARGE TO BOTH CHORDS USING LOAD BEARING COUPLERS. AT SUPPORTS FOR JACKING TUBES TO STANDARDS BELOW THE BEAM CHORDS. AT JACKING AND DROP TUBES TO JACKING TUBES ABOVE THE BEAM CHORDS.  
**USE 450/780 ALLOY BEAMS** TOP CHORD RESTRAINT @ 1.0M C/C MAX. BOTTOM CHORD RESTRAINT @ 1.0M C/C MAX. LATERAL BRACING AT @ 2.0M C/C MAX. PLAN BRACE FULL LENGTH ABOVE OR BELOW THE CHORD. FOR ALL STANDING GUP TUBES TO CHARGE TO BOTH CHORDS USING LOAD BEARING COUPLERS. AT SUPPORTS FOR JACKING TUBES TO STANDARDS BELOW THE BEAM CHORDS. AT JACKING AND DROP TUBES TO JACKING TUBES ABOVE THE BEAM CHORDS.  
**LEDGER BRACING** LEDGER BRACE TO BE SAYS INDICATED USING LOAD BEARING COUPLERS.

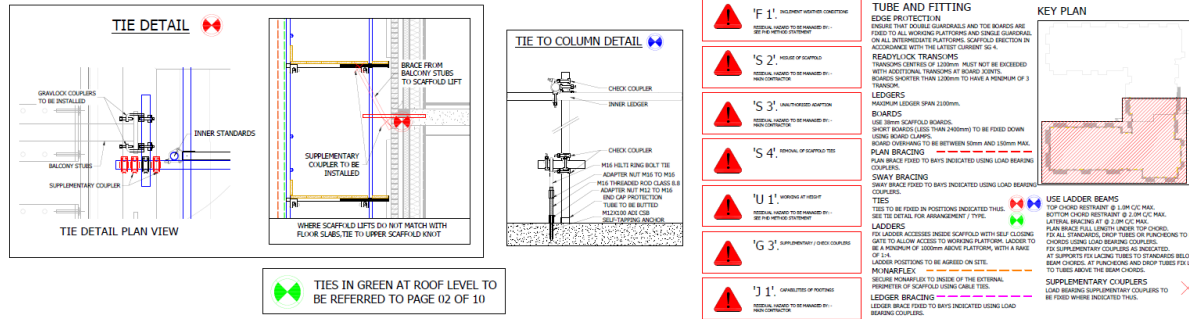


- F 1' REINFORCEMENT COUPLERS  
ERECTED AS PER TG20:13 GUIDE AND MANUFACTURE GUIDELINES
- J 1' CANTILEVER OF JOISTS  
ERECTED AS PER TG20:13 GUIDE AND MANUFACTURE GUIDELINES
- S 2' HEAD OF SCAFFOLD  
ERECTED AS PER TG20:13 GUIDE AND MANUFACTURE GUIDELINES
- S 3' INTERMEDIATE ADAPTATION  
ERECTED AS PER TG20:13 GUIDE AND MANUFACTURE GUIDELINES
- S 4' REMOVAL OF SCAFFOLD TIES  
ERECTED AS PER TG20:13 GUIDE AND MANUFACTURE GUIDELINES
- U 1' WORKING AT HEIGHT  
ERECTED AS PER TG20:13 GUIDE AND MANUFACTURE GUIDELINES
- G 3' SUPPLEMENTARY CHORD COUPLERS  
ERECTED AS PER TG20:13 GUIDE AND MANUFACTURE GUIDELINES

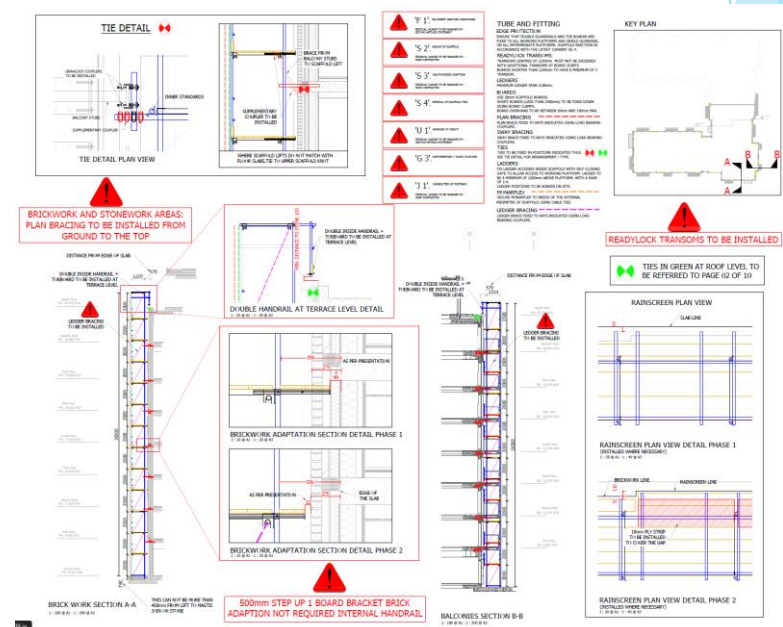
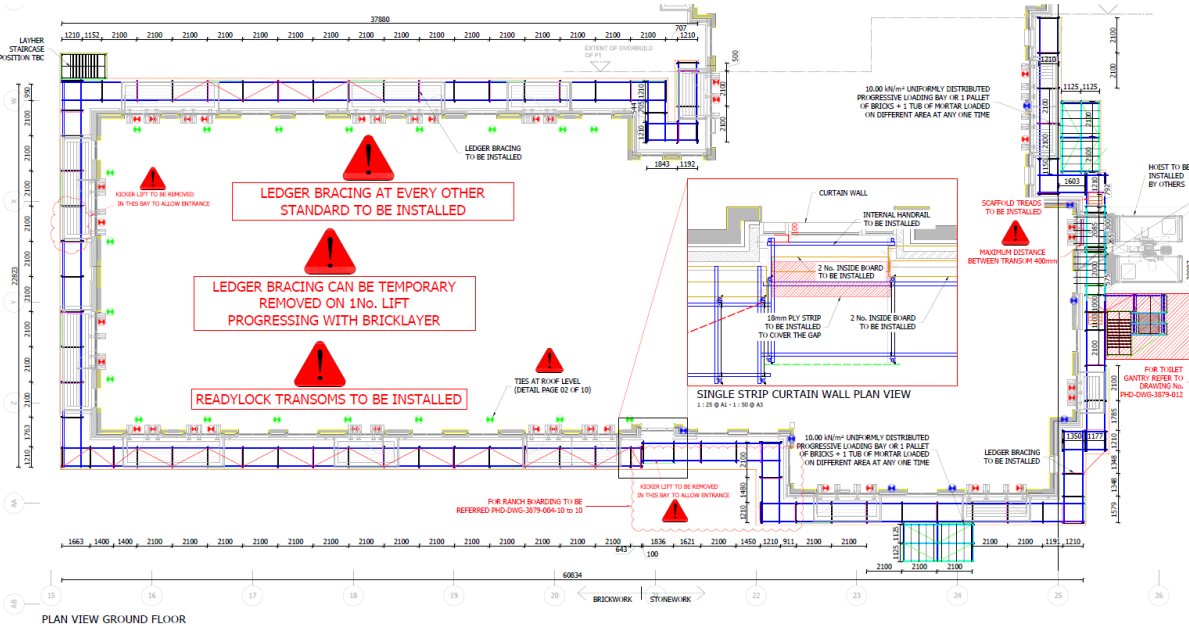
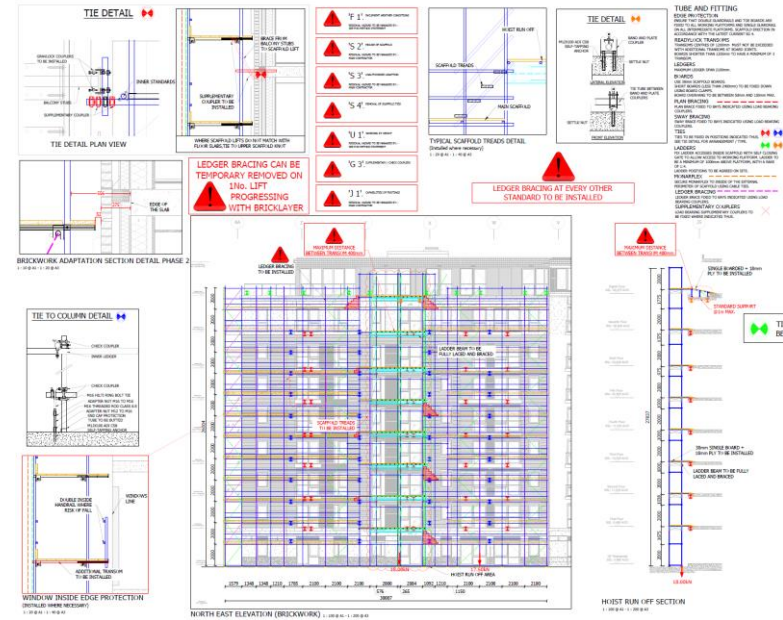


# INDEPENDENT SCAFFOLD: TUBE & FITTING-READYLOCK

- ▶ Project Title: Fulham Reach Block F2 (2018)
- ▶ Client: St. George



- TUBE AND FITTING**
- EDGE PROTECTORS: EDGE PROTECTORS AND TIE BOLDS ARE FIXED TO ALL WORKING PLATFORMS AND SINGLE COURSE/ALL INTERMEDIATE PLATFORMS. SCAFFOLD PROTECTORS IN ACCORDANCE WITH THE LATEST CURRENT SG 4.
- READYLOCK TRANSOMS**
- TRANSOM CENTRES OF LADING MUST NOT BE EXCEEDED WITH ADDITIONAL TRANSOMS AT BOARD JOINTS. BOARDS SHORTER THAN 1.000m TO HAVE A MINIMUM OF 3 TRANSOMS.
- LEDGERS**
- MAXIMUM LEDGER SPAN 2.100mm.
- BEARDS**
- USE INNER SCAFFOLD BOARDS. SHORT BEARDS (LESS THAN 2400mm) TO BE FIXED DOWN USING BOARD CLIPS.
- BOARD OVERHANGS** TO BE BETWEEN 50mm AND 100mm MAX.
- PLAN BRACING**
- PLAN BRACE FIXED TO BAYS INDICATED USING LOAD BEARING COUPLERS.
- SWAY BRACING**
- SWAY BRACE FIXED TO BAYS INDICATED USING LOAD BEARING COUPLERS.
- TIES**
- TIES TO BE FIXED IN POSITIONS INDICATED THIS SEE THE DETAIL FOR ARRANGEMENT TIE.
- LEDGERS**
- TO ALLOW ACCESS INSIDE SCAFFOLD WITH SELF CLOSING GATE TO ALLOW ACCESS TO WORKING PLATFORM. LAGGED TO BE A MINIMUM OF 100mm ABOVE PLATFORM WITH A MAX. OF 1/4.
- LEDGER POSITIONS** TO BE AGREED ON SITE.
- MINI-RIFLEX**
- SECURE MEMBERS TO INSIDE OF THE EXTERNAL PERIMETER OF SCAFFOLD USING CABLE TIE.
- LEDGER BRACING**
- LEDGER BRACE FIXED TO BAYS INDICATED USING LOAD BEARING COUPLERS.
- USE LADDER BEAMS**
- TOP CHORD RETAINMENT & 1.0m GC PAL. BOTTOM CHORD RETAINMENT & 1.0m GC PAL. LADDER BRACING @ 2.0m GC PAL. PLAN BRACE SHALL LENGTH UNDER TOP CHORD. FOR ALL TRANSOMS OVER TOPS OF PACKINGS TO BE CHECKED USING LOAD BEARING COUPLERS. FOR SUPPLEMENTARY COUPLERS BE INDICATED. AT SUPPORTS FOR LADING TUBES TO STANDARDS BELOW. BEAR CHARGES AT FUNCTIONS AND DROP TUBES TO LAG. TO TUBES ABOVE THE BEAR CHARGES.
- SUPPLEMENTARY COUPLERS**
- LOAD BEARING SUPPLEMENTARY COUPLERS TO BE FIXED WHERE INDICATED THIS.



# INDEPENDENT SCAFFOLD: TUBE & FITTING-READYLOCK

- ▶ Project Title: Chelsea Creek (2018)
- ▶ Client: St. George

## TUBE AND FITTING

**EDGE PROTECTION**  
 PROVIDE THAT ALL WORKING PLATFORMS AND THE WORKING AREAS SHALL BE PROTECTED BY SAFETY NETTING. SAFETY NETTING SHALL BE INSTALLED TO THE EXTERNAL PERIPHERY OF ALL WORKING PLATFORMS. SAFETY NETTING SHALL BE INSTALLED TO THE EXTERNAL PERIPHERY OF ALL WORKING PLATFORMS. SAFETY NETTING SHALL BE INSTALLED TO THE EXTERNAL PERIPHERY OF ALL WORKING PLATFORMS.

**READYLOCK TRANSOMS**  
 READYLOCK TRANSOMS SHOULD BE USED IN ALL WORKING PLATFORMS. READYLOCK TRANSOMS SHOULD BE USED IN ALL WORKING PLATFORMS. READYLOCK TRANSOMS SHOULD BE USED IN ALL WORKING PLATFORMS.

**LOADERS**  
 MAXIMUM LEADER SPAN 2200MM.

**NONWELFLEX NETTING**  
 SECOND WELFLEX NETTING TO INSURE OF THE EXTERNAL PERIPHERY OF ALL WORKING PLATFORMS.

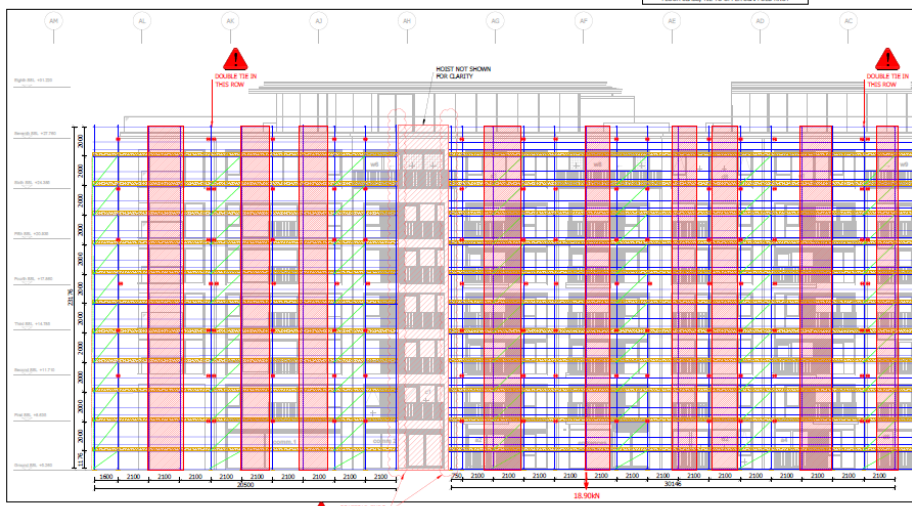
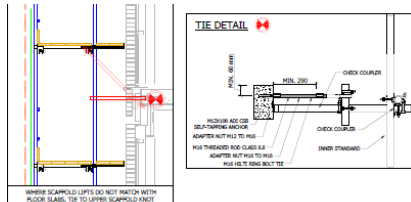
**BOARDS**  
 USE 25MM THICK BOARDS. BOARDS SHOULD BE USED IN ALL WORKING PLATFORMS. BOARDS SHOULD BE USED IN ALL WORKING PLATFORMS.

**USE LADDER BEAMS**  
 USE LADDER BEAMS IN ALL WORKING PLATFORMS. LADDER BEAMS SHOULD BE USED IN ALL WORKING PLATFORMS.

**SMOKE BRACING**  
 SMOKE BRACING SHOULD BE USED IN ALL WORKING PLATFORMS. SMOKE BRACING SHOULD BE USED IN ALL WORKING PLATFORMS.

**TIES**  
 TIES SHOULD BE USED IN ALL WORKING PLATFORMS. TIES SHOULD BE USED IN ALL WORKING PLATFORMS.

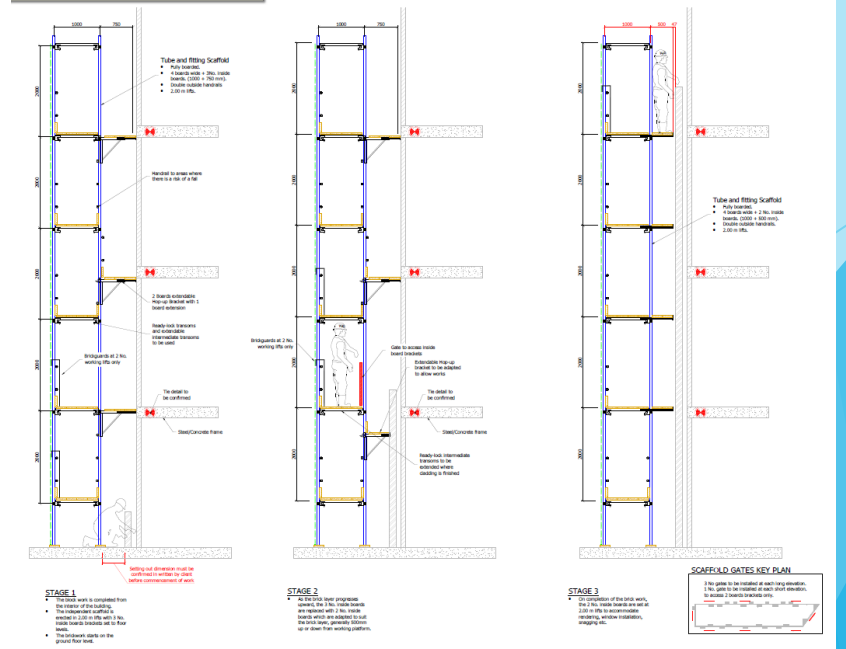
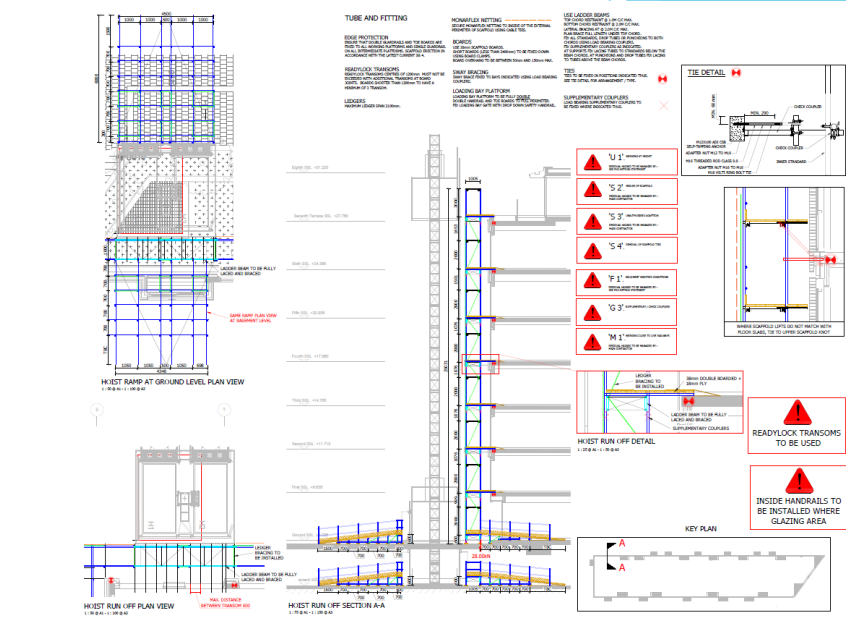
**SUPPLEMENTARY COUPLERS**  
 SUPPLEMENTARY COUPLERS SHOULD BE USED IN ALL WORKING PLATFORMS. SUPPLEMENTARY COUPLERS SHOULD BE USED IN ALL WORKING PLATFORMS.



- 1' 1" (25.4mm) MAXIMUM CLEARANCE
- 2" (50.8mm) MAXIMUM CLEARANCE
- 3" (76.2mm) MAXIMUM CLEARANCE
- 4" (101.6mm) MAXIMUM CLEARANCE
- 5" (127.0mm) MAXIMUM CLEARANCE
- 6" (152.4mm) MAXIMUM CLEARANCE
- 7" (177.8mm) MAXIMUM CLEARANCE
- 8" (203.2mm) MAXIMUM CLEARANCE
- 9" (228.6mm) MAXIMUM CLEARANCE
- 10" (254.0mm) MAXIMUM CLEARANCE
- 11" (279.4mm) MAXIMUM CLEARANCE

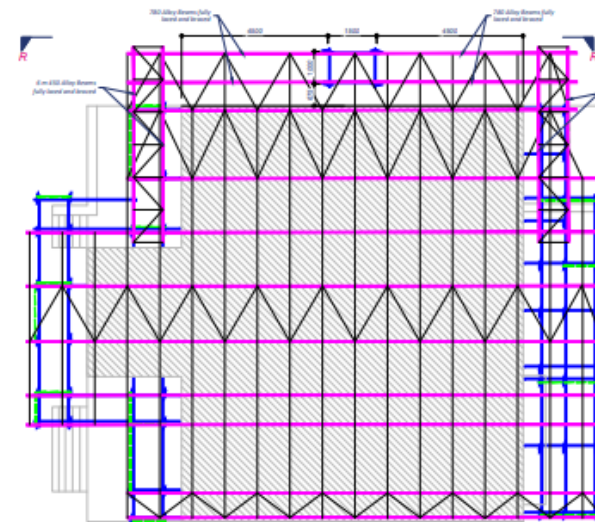
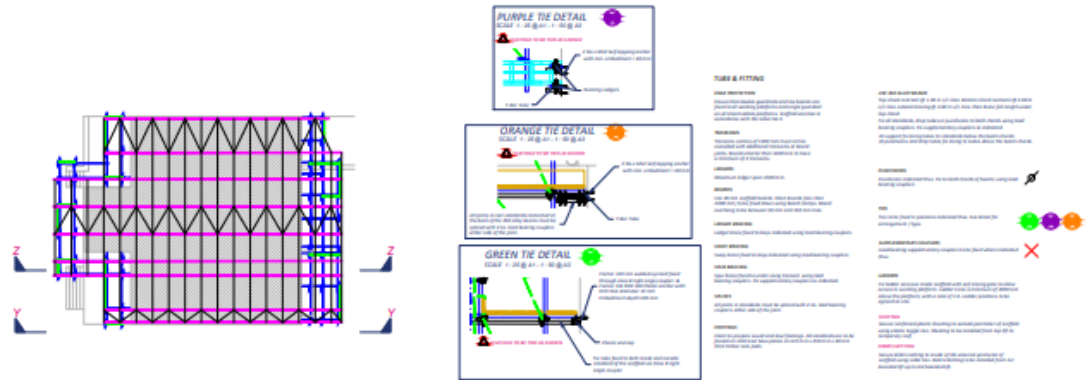
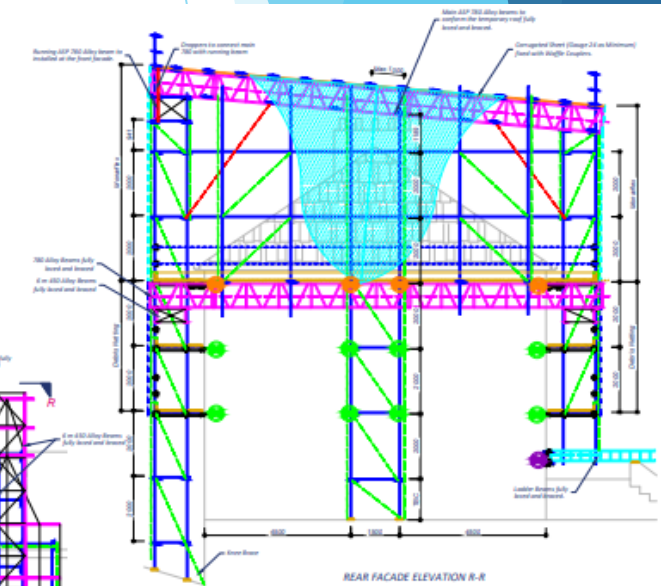
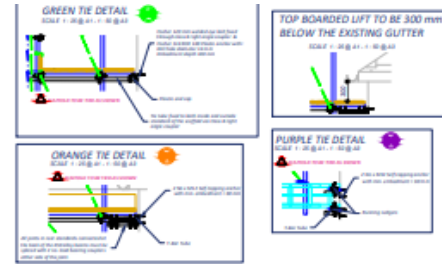
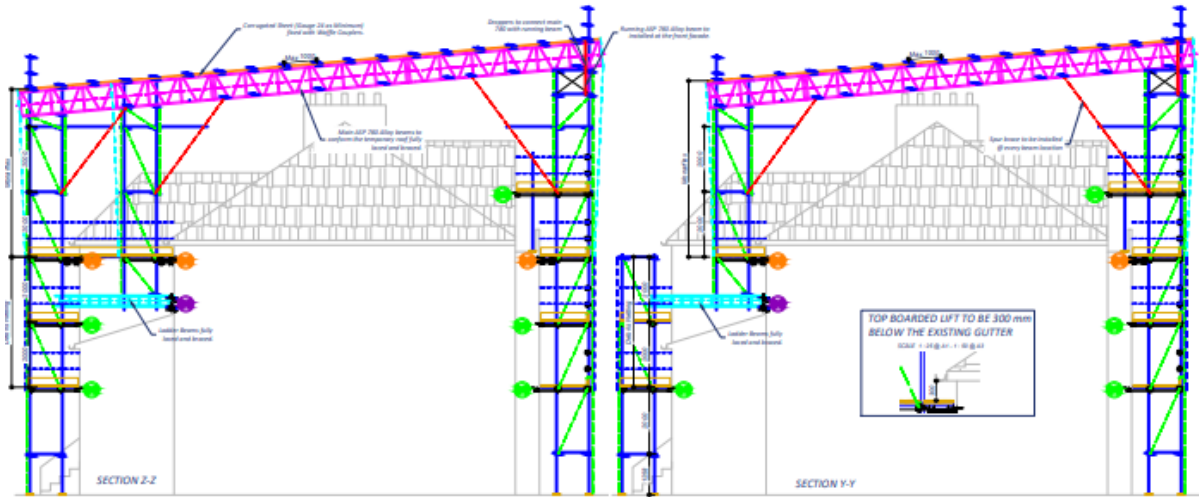
AVOID TIES IN THIS ZONE

- INSIDE HANDRAILS TO BE INSTALLED WHERE GLAZING AREA
- READYLOCK TRANSOMS TO BE USED



# TEMPORARY ROOF

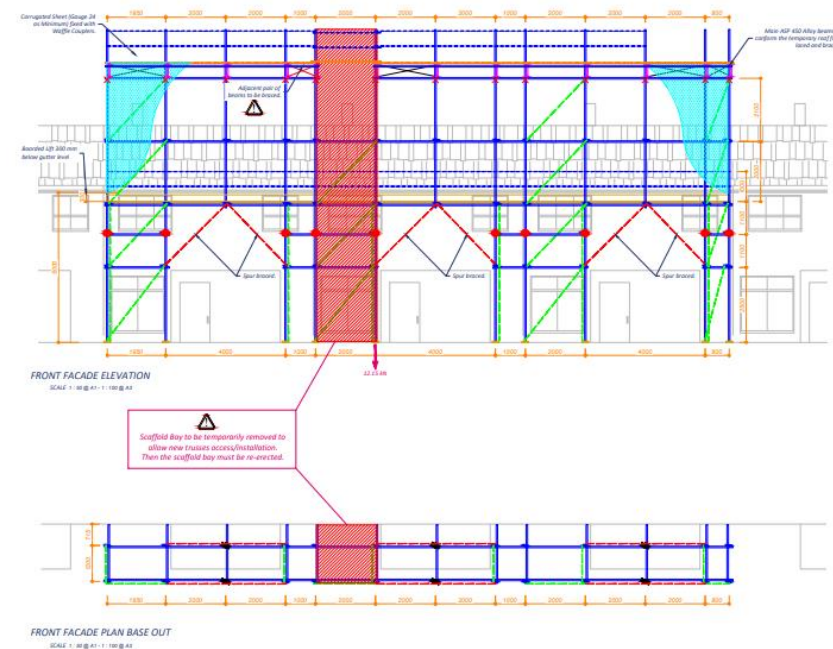
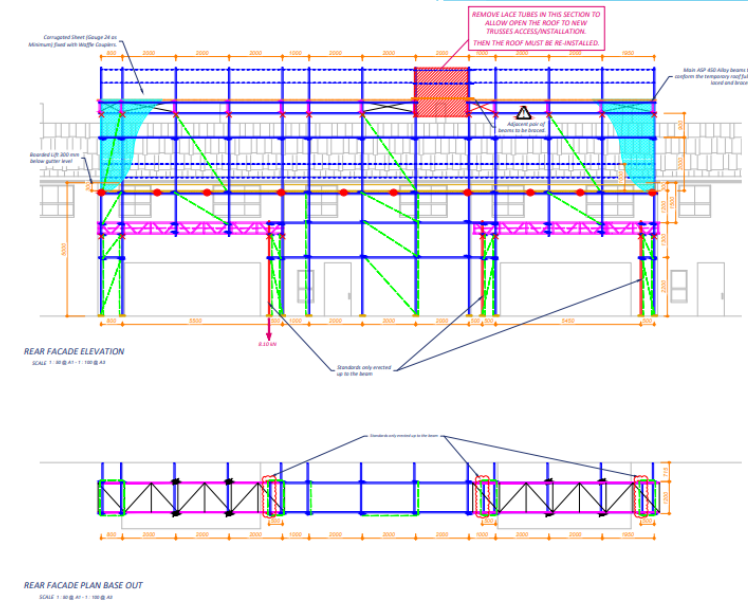
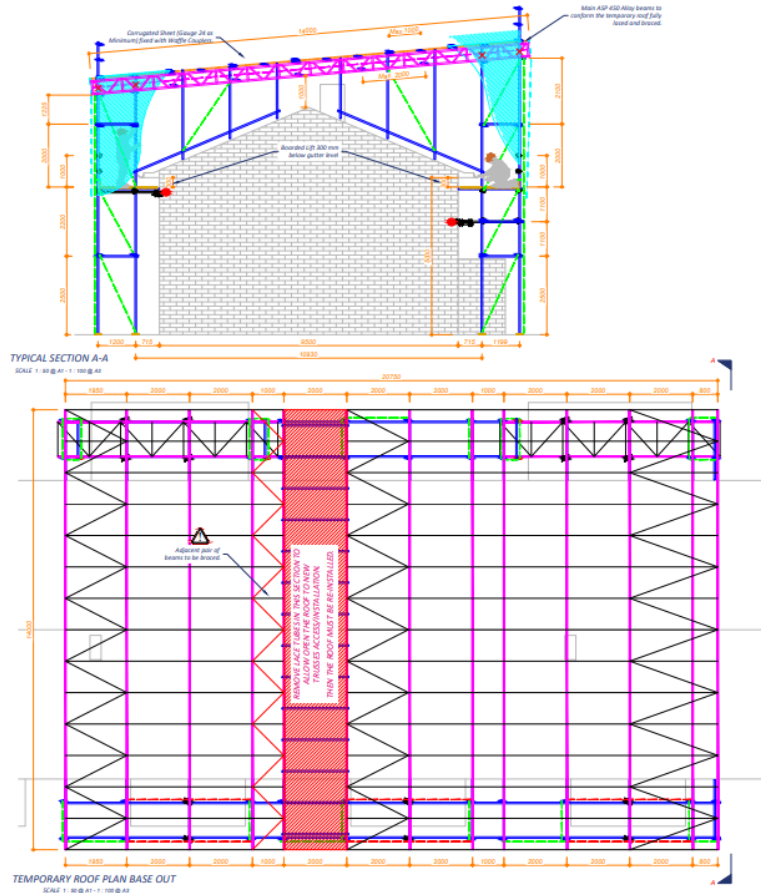
- ▶ Project Title: Ardbeg Road (2021)
- ▶ Client: Particular



| TIE & FITTING | NOTES | STATUS |
|---------------|-------|--------|
| GREEN TIE     | ...   | ✓      |
| ORANGE TIE    | ...   | ✓      |
| PURPLE TIE    | ...   | ✗      |

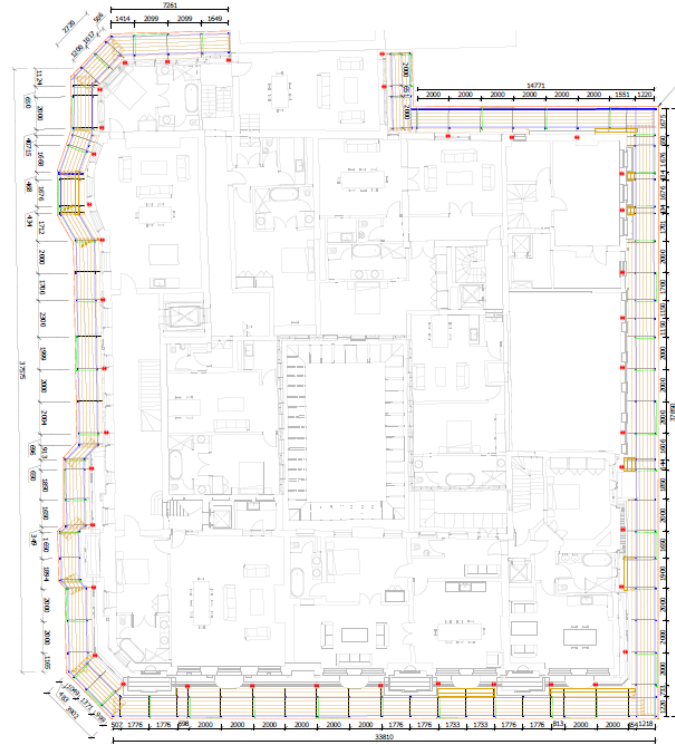
# TEMPORARY ROOF

- ▶ Project Title: Thumpers-Hemel Hemsptead (2021)
- ▶ Client: Particular



# TEMPORARY ROOF

- ▶ Project Title: South Audley Street (2018)
- ▶ Client: Gardiner and Theobald



MAIN SCAFFOLD BASE OUT FIRST AND MEZZANINE FLOOR PLAN VIEW

## TUBE AND FITTINGS

**EDGE PROTECTION**  
Ensure that all vertical standards and the boards are fixed to all working platforms and internal guardrails on all intermediate platforms. Scaffold erection in accordance with the latest current SA 4.

**TRANSOMS**  
TRANSOM CENTRES OF 1200mm MUST NOT BE EXCEEDED WITH ADDITIONAL TRANSOMS AT BOARD JOISTS. BOARDS BROADER THAN 1200mm TO HAVE A MINIMUM OF 3 TRANSOMS.

**LEDGERS**  
MAXIMUM LEDGER SPAN 2200mm.

**BOARDS**  
USE 30mm SCAPPAID BOARDS. SHORT BOARDS LESS THAN 1200mm TO BE FIRED DOWN USING BOARD CLIPS. BOARD JOINTS TO BE BETWEEN BEAMS AND 150mm MAX.

**LEDGER BRACING**  
LEDGER BRACE FIRED TO BAYS INDICATED USING LOAD BEARING COUPLERS.

**SWAY BRACING**  
SWAY BRACE FIRED TO BAYS INDICATED USING LOAD BEARING COUPLERS.

**USE LADDER/TRIO ALLOY BEAMS**  
TOP CHAIRS SPACING @ 2.0M CC MAX. BOTTOM CHAIRS SPACING @ 2.0M CC MAX. LATERAL BRACING @ 2.0M CC MAX. PLUM BRACE ALL LADDER UNDER TOP CHAIRS. FIT ALL STANDBY LOAD TUBES TO CHANGELINE TO BOTH SIDES OF ALL LADDER UNDER TOP CHAIRS. FIT SUPPLEMENTARY COUPLERS AS INDICATED AT JOINTS FOR LACING TUBES TO CHANGELINE BELOW THE BEAM JOINTS. AT JOINTS AND SHIP TUBES TO LACING TO TUBES ABOVE THE BEAM JOINTS.

**PUNCHBOES**  
PUNCHBOES INDICATED THIS. FIT TO BOTH COURSE OF BEAMS USING LOAD BEARING COUPLERS.

**TIES**  
TIES TO BE FIRED IN POSITIONS INDICATED THIS. SEE THE DETAIL FOR ARRANGEMENT / TYPE.

**MONAFLEX NETTING**  
SECURE MONAFLEX NETTING TO INSIDE OF THE EXTERNAL PERIMETER OF SUPPLIED LACING TIE.

**LAYER**  
TEMPORARY LAYER KEDER ROOF XL. KEDER ROOF TO BE BRACED IN FULL ACCORDANCE WITH MANUFACTURERS' GUIDELINES.

- ⚠ 'F 1' INCIDENT REDUCE CAPACITY  
MUST BE USED TO BE NUMBERED BY THE METHOD OF FIXTURE
- ⚠ 'S 2' BEAM OF SCAPPAID  
MUST BE USED TO BE NUMBERED BY THE METHOD OF FIXTURE
- ⚠ 'S 4' BEAM OF SCAPPAID TIE  
MUST BE USED TO BE NUMBERED BY THE METHOD OF FIXTURE
- ⚠ 'U 1' MEMBER AT JOINT  
MUST BE USED TO BE NUMBERED BY THE METHOD OF FIXTURE

⚠ TIE ARRANGEMENT SUBJECT TO FINAL DESIGN, CALCULATION AND PRELIMINARY TEST



HIGHER KEDER ROOF XL + MAIN SCAFFOLD SECTION A-A

⚠ TIE ARRANGEMENT SUBJECT TO FINAL DESIGN, CALCULATION AND PRELIMINARY TEST

REMARK: THIS TABLE IS FOR INFORMATION ONLY. THE USER MUST BE AWARE OF THE REQUIREMENTS OF ALL APPLICABLE STANDARDS AND REGULATIONS. ALL STRUCTURAL ELEMENTS MUST BE DESIGNED AND CONSTRUCTED IN ACCORDANCE WITH THE LATEST CURRENT SA 4.

**TRANSOMS**  
TRANSOM CENTRES OF 1200mm MUST NOT BE EXCEEDED WITH ADDITIONAL TRANSOMS AT BOARD JOISTS. BOARDS BROADER THAN 1200mm TO HAVE A MINIMUM OF 3 TRANSOMS.

**LEDGERS**  
MAXIMUM LEDGER SPAN 2200mm.

**BOARDS**  
USE 30mm SCAPPAID BOARDS. SHORT BOARDS LESS THAN 1200mm TO BE FIRED DOWN USING BOARD CLIPS. BOARD JOINTS TO BE BETWEEN BEAMS AND 150mm MAX.

**LEDGER BRACING**  
LEDGER BRACE FIRED TO BAYS INDICATED USING LOAD BEARING COUPLERS.

**SWAY BRACING**  
SWAY BRACE FIRED TO BAYS INDICATED USING LOAD BEARING COUPLERS.

**USE LADDER/TRIO ALLOY BEAMS**  
TOP CHAIRS SPACING @ 2.0M CC MAX. BOTTOM CHAIRS SPACING @ 2.0M CC MAX. LATERAL BRACING @ 2.0M CC MAX. PLUM BRACE ALL LADDER UNDER TOP CHAIRS. FIT ALL STANDBY LOAD TUBES TO CHANGELINE TO BOTH SIDES OF ALL LADDER UNDER TOP CHAIRS. FIT SUPPLEMENTARY COUPLERS AS INDICATED AT JOINTS FOR LACING TUBES TO CHANGELINE BELOW THE BEAM JOINTS. AT JOINTS AND SHIP TUBES TO LACING TO TUBES ABOVE THE BEAM JOINTS.

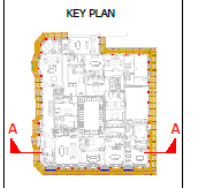
**PUNCHBOES**  
PUNCHBOES INDICATED THIS. FIT TO BOTH COURSE OF BEAMS USING LOAD BEARING COUPLERS.

**TIES**  
TIES TO BE FIRED IN POSITIONS INDICATED THIS. SEE THE DETAIL FOR ARRANGEMENT / TYPE.

**MONAFLEX NETTING**  
SECURE MONAFLEX NETTING TO INSIDE OF THE EXTERNAL PERIMETER OF SUPPLIED LACING TIE.

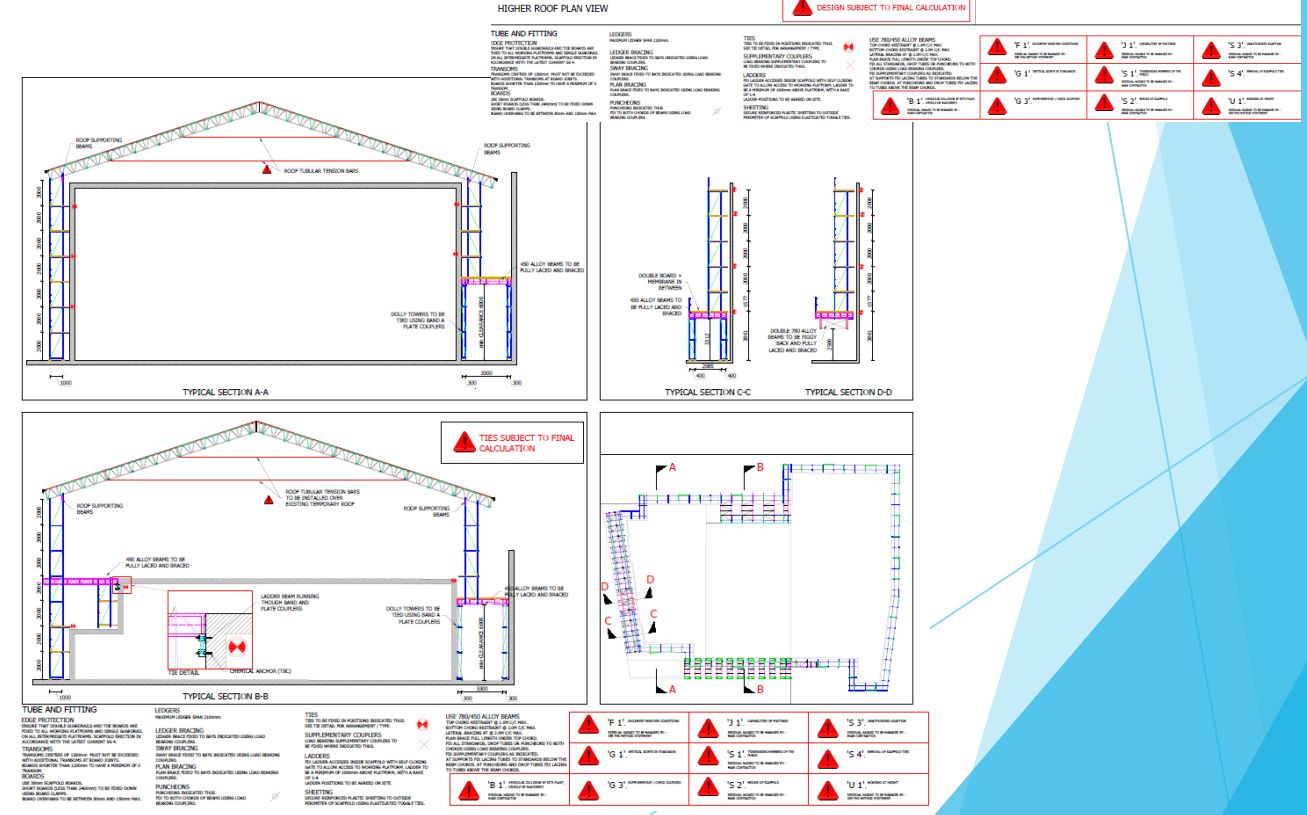
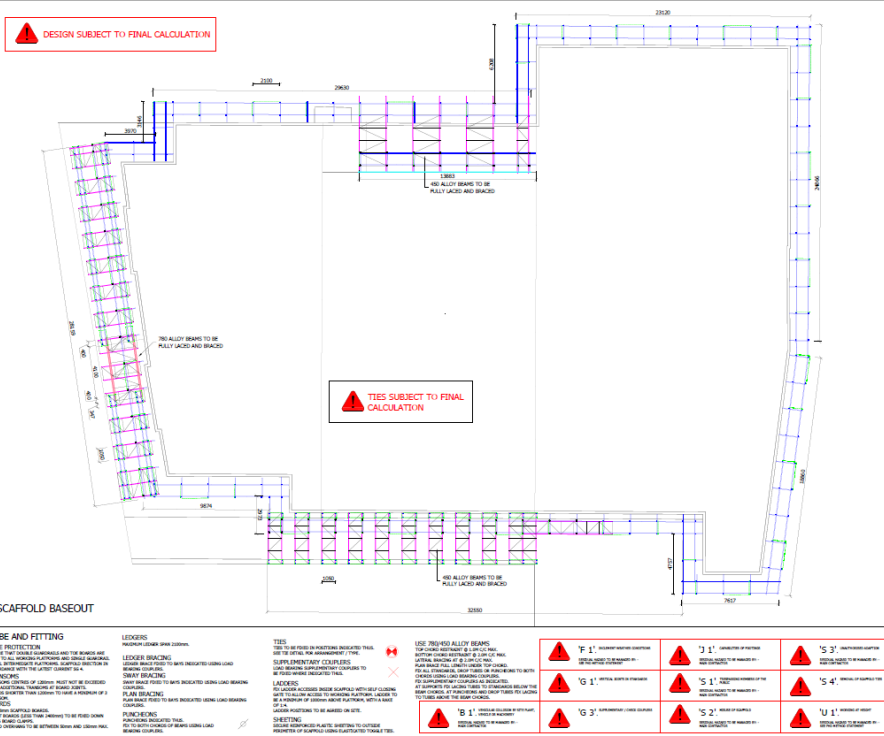
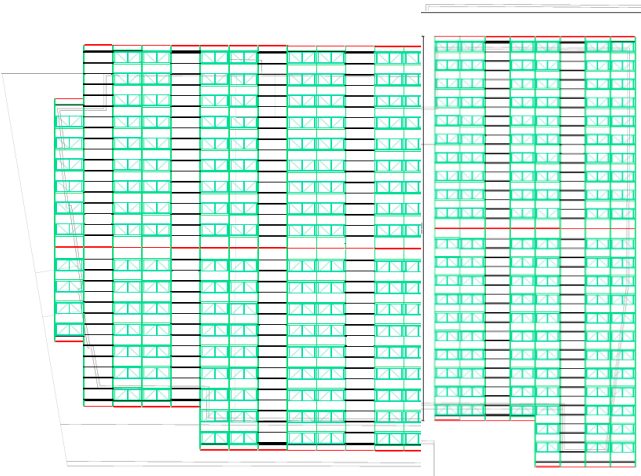
**LAYER**  
TEMPORARY LAYER KEDER ROOF XL. KEDER ROOF TO BE BRACED IN FULL ACCORDANCE WITH MANUFACTURERS' GUIDELINES.

- ⚠ 'F 1' INCIDENT REDUCE CAPACITY  
MUST BE USED TO BE NUMBERED BY THE METHOD OF FIXTURE
- ⚠ 'S 2' BEAM OF SCAPPAID  
MUST BE USED TO BE NUMBERED BY THE METHOD OF FIXTURE
- ⚠ 'S 4' BEAM OF SCAPPAID TIE  
MUST BE USED TO BE NUMBERED BY THE METHOD OF FIXTURE
- ⚠ 'U 1' MEMBER AT JOINT  
MUST BE USED TO BE NUMBERED BY THE METHOD OF FIXTURE



# TEMPORARY ROOF

- ▶ Project Title: Old Courts Stratford (2017)
- ▶ Client: Conisbee

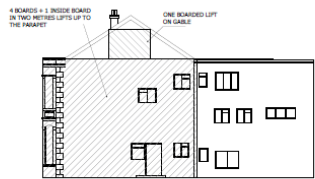
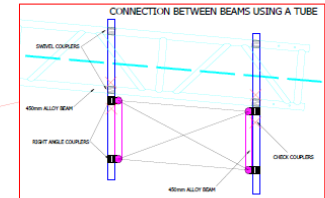


# TEMPORARY ROOF

- ▶ Project Title: Westbourne Villas
- ▶ Client: PSE Associates



WEST FACING FRONT ELEVATION



SOUTH FACING SIDE ELEVATION

## TUBE AND FITTING

**SPLICES**  
ALL SPLICES IN TRANSDOMES MUST BE SPLICED WITH THREE LIFT TUBES (CONNECTION BETWEEN HOLES OF SPLICE).

**EDGE PROTECTION**  
ROOF BRACE FIXED TO WALLS INDICATED USING LOAD BEARING COURSES.

**TRANSOMS**  
TRANSOM CONTROL OF LIFTERS MUST NOT BE EXCEEDED WITH ADDITIONAL TRANSOMS AT RIGID JOINTS. ALL JOINTS MUST BE TO BE POSITIONED ON A WALL PLATE OR CONCRETE TRANSOM OR BRACE BUSH.

**LEDGERS**  
TRANSOM CONTROL OF LIFTERS MUST NOT BE EXCEEDED WITH ADDITIONAL TRANSOMS AT RIGID JOINTS. ALL JOINTS MUST BE TO BE POSITIONED ON A WALL PLATE OR CONCRETE TRANSOM OR BRACE BUSH.

**BOARDS**  
USE 40mm ALLOY BEAMS FOR ALL JOINTS TO BE POSITIONED ON A WALL PLATE OR CONCRETE TRANSOM OR BRACE BUSH.

## LEADER BRACING

LEADER BRACE FIXED TO WALLS INDICATED USING LOAD BEARING COURSES.

LEADER BRACE TO BE POSITIONED ON A WALL PLATE OR CONCRETE TRANSOM OR BRACE BUSH.

## SWAY BRACING

SWAY BRACE TO BE POSITIONED ON A WALL PLATE OR CONCRETE TRANSOM OR BRACE BUSH.

## FIXTURES

FIXTURES TO BE POSITIONED ON A WALL PLATE OR CONCRETE TRANSOM OR BRACE BUSH.

## TIRES

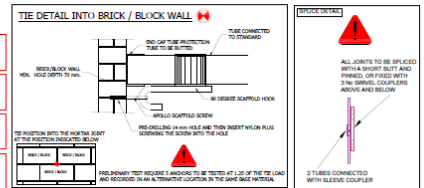
TIRES TO BE POSITIONED ON A WALL PLATE OR CONCRETE TRANSOM OR BRACE BUSH.

## SUPPLEMENTARY COURSES

SUPPLEMENTARY COURSES TO BE POSITIONED ON A WALL PLATE OR CONCRETE TRANSOM OR BRACE BUSH.

## SHEETING

SHEETING TO BE POSITIONED ON A WALL PLATE OR CONCRETE TRANSOM OR BRACE BUSH.



## TUBE AND FITTING

**SPLICES**  
ALL SPLICES IN TRANSDOMES MUST BE SPLICED WITH THREE LIFT TUBES (CONNECTION BETWEEN HOLES OF SPLICE).

**EDGE PROTECTION**  
ROOF BRACE FIXED TO WALLS INDICATED USING LOAD BEARING COURSES.

**TRANSOMS**  
TRANSOM CONTROL OF LIFTERS MUST NOT BE EXCEEDED WITH ADDITIONAL TRANSOMS AT RIGID JOINTS. ALL JOINTS MUST BE TO BE POSITIONED ON A WALL PLATE OR CONCRETE TRANSOM OR BRACE BUSH.

**LEDGERS**  
TRANSOM CONTROL OF LIFTERS MUST NOT BE EXCEEDED WITH ADDITIONAL TRANSOMS AT RIGID JOINTS. ALL JOINTS MUST BE TO BE POSITIONED ON A WALL PLATE OR CONCRETE TRANSOM OR BRACE BUSH.

**BOARDS**  
USE 40mm ALLOY BEAMS FOR ALL JOINTS TO BE POSITIONED ON A WALL PLATE OR CONCRETE TRANSOM OR BRACE BUSH.

## LEADER BRACING

LEADER BRACE FIXED TO WALLS INDICATED USING LOAD BEARING COURSES.

LEADER BRACE TO BE POSITIONED ON A WALL PLATE OR CONCRETE TRANSOM OR BRACE BUSH.

## SWAY BRACING

SWAY BRACE TO BE POSITIONED ON A WALL PLATE OR CONCRETE TRANSOM OR BRACE BUSH.

## FIXTURES

FIXTURES TO BE POSITIONED ON A WALL PLATE OR CONCRETE TRANSOM OR BRACE BUSH.

## TIRES

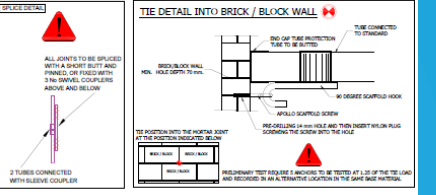
TIRES TO BE POSITIONED ON A WALL PLATE OR CONCRETE TRANSOM OR BRACE BUSH.

## SUPPLEMENTARY COURSES

SUPPLEMENTARY COURSES TO BE POSITIONED ON A WALL PLATE OR CONCRETE TRANSOM OR BRACE BUSH.

## SHEETING

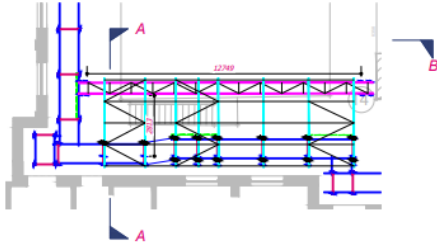
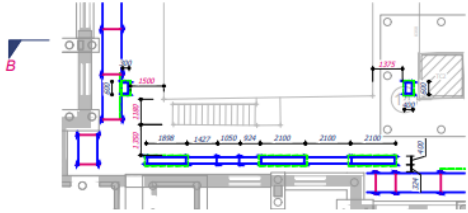
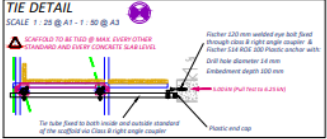
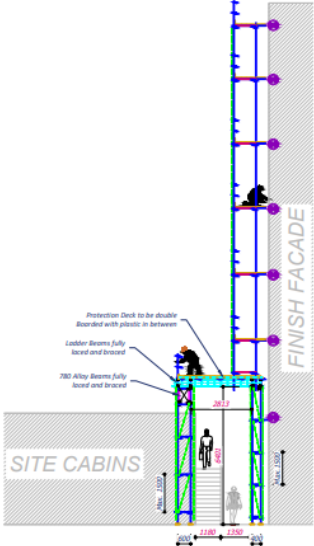
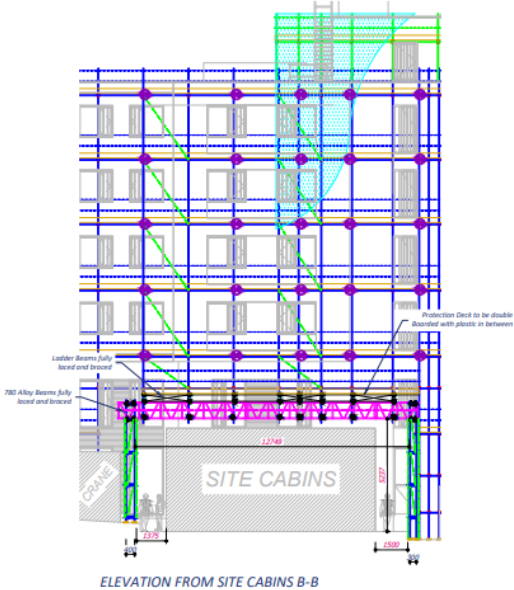
SHEETING TO BE POSITIONED ON A WALL PLATE OR CONCRETE TRANSOM OR BRACE BUSH.






# GANTRY

- ▶ Project Title: Moulsecomb Way - Brighton (2021)
- ▶ Client: HG Construction



## TUBE & FITTING

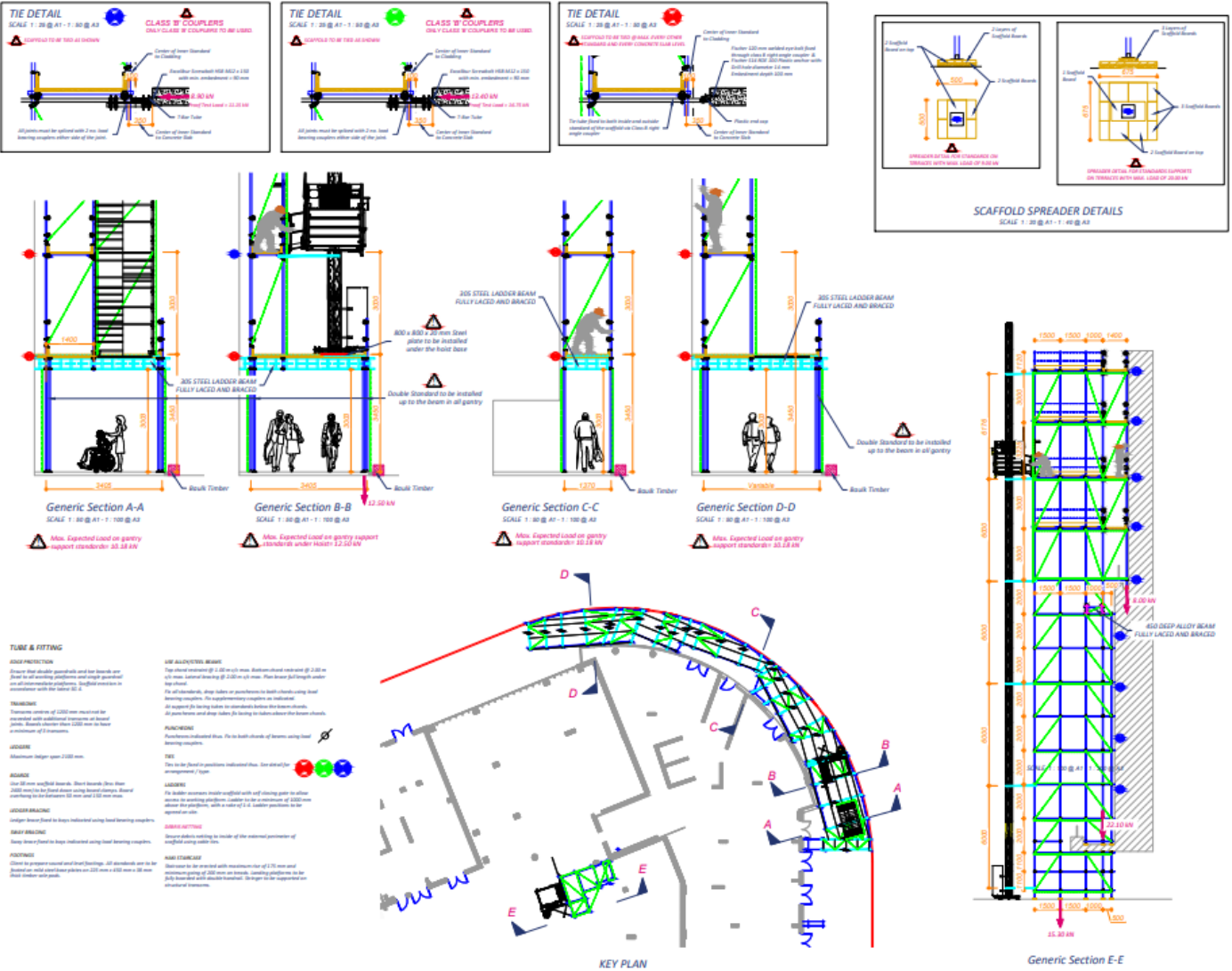
- EDGE PROTECTION**  
Ensure that double guardrails and toe boards are fixed to all working platforms and edge protected on all intermediate platforms. Scaffold erection in accordance with the approved S.A.
- DOUBLE BOARDS**  
Use double 30 mm scaffold boards with members in between. Short boards (less than 2400 mm) to be fixed using beam clamps. Board spacing to be between 30 mm and 150 mm max.
- LEDGER BRACING**  
Ledger brace fixed to bays indicated using lead bearing couplers.
- SWAY BRACING**  
Sway brace fixed to bays indicated using lead bearing couplers.
- ACROTTING**  
Client to prepare sound and level footings. All standards are to be placed on steel base plates on 225 mm x 450 mm x 28 mm thick timber sole grids.
- USE #10 ALKY BEAMS**  
Top chord members @ 2.00 m c/c max. Bottom chord restraint @ 2.00 m c/c max. Lateral bracing @ 2.00 m c/c max. Plan brace full length under top chord.  
Fit all standards, drop tubes or punchions to both chords using lead bearing couplers. Fit supplementary couplers as indicated.  
At support fit lacing tubes to standards below the beam chords.  
At punchions and drop tubes fit lacing to tubes above the beam chords.
- PUNCHIONS**  
Punchions indicated thus. Fit to both chords of beams using lead bearing couplers.
- TIES**  
Ties to be fixed in positions indicated thus. See detail for arrangement. 
- NO SHEETING ALLOWED**  
No sheeting, signboards or hoardings, unless already shown, should be added to the scaffold without prior written consent.

SUPPORT TOWERS BASE OUT

BEAM WORK PLAN VIEW

# GANTRY

- ▶ Project Title: Luma Apartments (2021)
- ▶ Client: Durkan

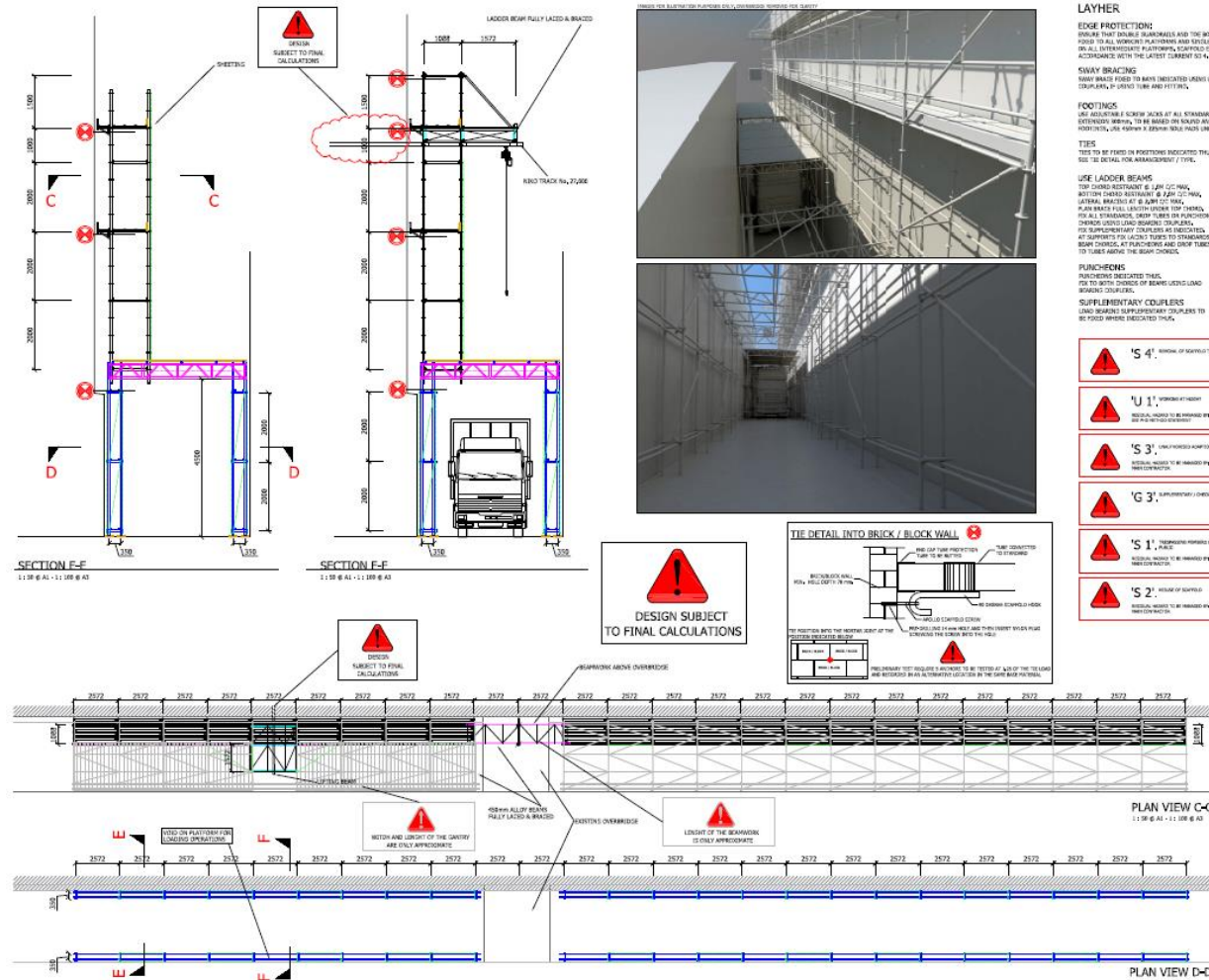




# GANTRY

► Project Title: Medicine Gallery Science Museum (2017)

► Client: J. Walker



# GANTRY

- ▶ Project Title: Seymour Street (2016)
- ▶ Client: Galliford Try

